

Copyright

- Jiangxi HONGTAI Industry Group Co., Ltd own ALUTILE registered trademark and symbol mark, All right of information and pictures relate to HONGTAI Group and design under the publication are reserved by Jiangxi HONGTAI Industry Group Co, Ltd, and counterfeit will be sued.
- The company reserves the right to change specifications, product design, parameters without prior notice
- All the content on this information have been carefully checked and, if you have any printing errors or omissions or misunderstandings, the company reserves the right to interpret.

Quality Creates Reliability

# ALUTILE<sup>®</sup>

Solid Aluminium Panel



Our Certificates:



CE Certificate



SGS Test Report



Intertek Test Report



ASTM Standard Test



BS Standard Test



FHWA



ISO9001 / ISO14001 Certificate



International Accreditation Certificate

**JIANGXI HONGTAI INDUSTRY GROUP CO., LTD.**

[www.alutile.com](http://www.alutile.com)

ADD:NO.116 6 Gaoxin Road, State High-Tech. Development Zone, Nanchang, Jiangxi, China Tel:+86-791-88162161/88162180/88161917 Fax:+86-791-88162165  
PC:330096 E-mail:alutile@alutile.com alutilechina@126.com



## About Us



Jiangxi Hongtai Industry Group Co.,Ltd. is located in state High-Tech development zone, Nanchang, Jiangxi, China.

As one of the leading enterprise in the relevant application of global decorative building materials and energy-saving products, our company is always dedicated to scientific research, developing, manufacturing, selling, proceeding and service in the industry of building materials. The main products include Solid Aluminum Panel, Aluminum Core Panel, Aluminum Composite Panel, Aluminum Ceiling, Thermal Insulation Panel, etc. We possess the completely independent intellectual property rights for multiple products. By virtue of superior quality and excellent service, ALUTILE products have been exported to more than 100 countries and regions and gained a number of international certificates.

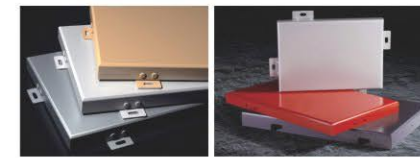
Our company perfectly combined the decorative products with functional products creatively and dedicated to mature technology and creative application to bring the clients the experience of maximum value.

We possess a professional and specialized manufacturing, technology research & development and marketing team to offer timely, meticulous and overall services through the global marketing network, our goal is dedicated to be a global enterprise trusted by the social and clients.



## ALUTILE PVDF Curtain Wall Solid Aluminum Panel

ALUTILE PVDF Curtain Wall Solid Aluminum Panel are composed of panel, reinforcement tube and angel bracket, etc. Using high quality and strength 3003H24、5005H24 alloy as the base material, selects Kynar500 PVDF coating which produced by international famous coating suppliers such as American PPG, Netherlands AkzoNobel etc. The performance of coating can meet the request of AAMA-2605-98 Standard of AAMA and ASCA.



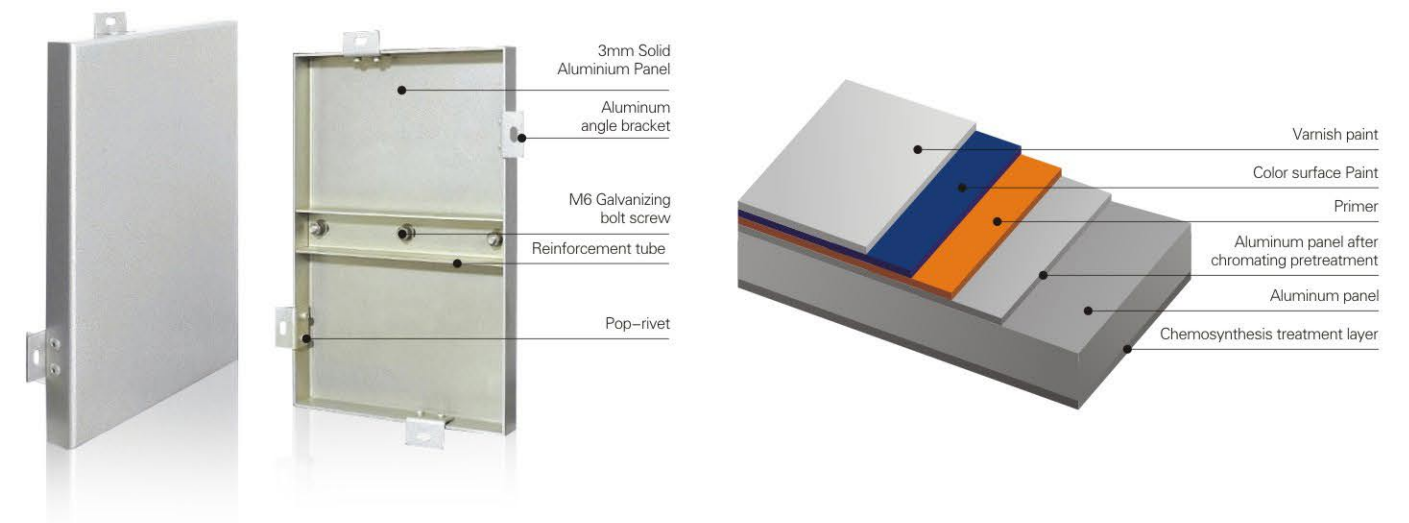
### Character of ALUTILE PVDF Solid Aluminum Panel:

1. Light weight, good rigidity and high strength.
2. Excellent weather resistance and UV resistance & Superior acid & alkali resistance.
3. Due to good processing performance, it can be processed all kinds of complicated shape such as flat surface, arc surface and spherical surface etc.
4. Various color and good decorative effect.
5. Anti-contamination & Easy to clean and maintain.
6. Quick and convenient installation & construction.

### Application Scope:

Curtain wall, elevated corridor, pedestrian bridge, interior ceiling, advertising signs, column etc. It is widely used for the external facade of airport, station, subway, light rail, exhibition centre, office building, exhibition centre, shopping mall, stadium, Commercial centre and residential district etc.

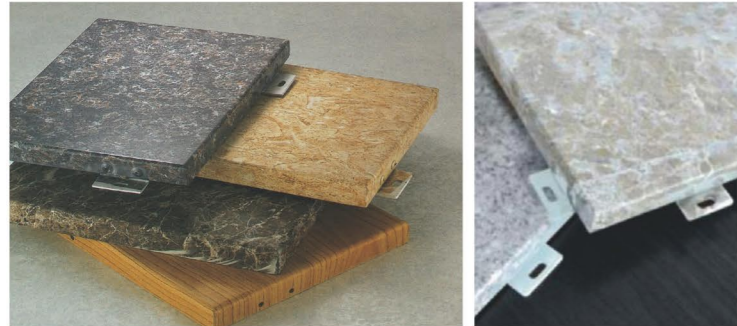
### ALUTILE Solid Aluminium Panel Structure Drawing



Products Introduction

## ALUTILE Marble Grain PVDF Spraying Solid Aluminum Panel

Marble Grain Solid Aluminum Panel is printed on PVDF coating with the marble film imported from Italy after vacuuming treatment. It not only possesses the same appearance of marble, but also has excellent properties of PVDF coating.



### Advantages:

1. Light weight, low cost
2. Easy to install
3. Environmental protection
4. Anti-dirty and self-cleaning
5. Good color retention, good physical performance, easy to process a variety of shapes

## ALUTILE Wood Grain Solid Aluminum Panel



The transfer wood grain aluminum panel transfers the color texture pattern on the surface of panel by the transfer machine under vacuum condition, thereby have protective and decorative effect, moreover it owns the advantage of no pollution, strong adhesion, rich- colored, etc. It is widely used in architecture and indoor decoration of imitating wood grain, which possesses not only the texture effect of natural wood grain but also superior fire resistance performance.



## Products Introduction

### ALUTILE Hyperboloid Solid Aluminum Panel

---

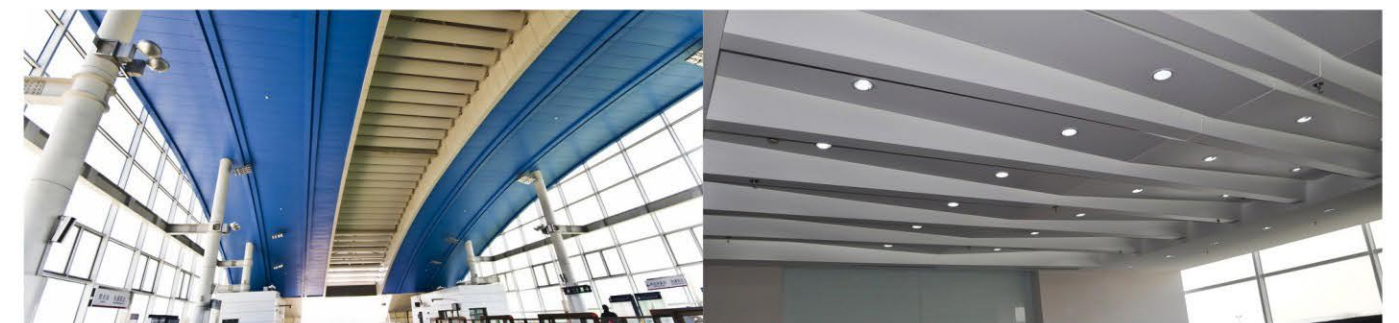
The hyperboloid solid aluminum panel is manufactured by German imported universal molding machine together with special CNC software of hyperboloid within a short time. Its main features are high precision, smooth surface and precise joint. We can offer the detailed scheme according to client's requirements and customize hyperboloid surfaces and spherical surfaces of any size to create a unique and beautiful three-dimensional shape.



### ALUTILE Aluminum Ceiling

---

The various installation system and splicing method of Aluminum ceiling can express the succinct and generous visual effect by the combination of rectangle shape and square shape Aluminum ceiling. Moreover, It is very convenient to create the unique style by different arrangement. Since the installation of ALUTILE Aluminum ceiling is very convenient, it is widely used for office building, commercial space, airport, metro station and exhibition center etc.



## Workshop

Adopt the most advanced CNC punch machine, CNC bending machine, machining center for panel material and full-automatic electrostatic spraying production line to produce high-precision solid Aluminium panel. Produce all kinds of supernormal and complicated construction sketch solid Aluminium panel. Machining accuracy can reach +0.1mm. The production capacity for solid Aluminium panel can reach about 1.5 million square meter.



## Coating Line



## Laboratory

Our company has made a huge investment to establish world-wide leading laboratory with all test items. The laboratory includes physical property laboratory, chemical property laboratory, artificial weathering laboratory, coating analysis laboratory, fire-resistance property laboratory and new product research and development center etc. All test items for metal curtain wall materials can be tested in our laboratory. Due to the advanced testing equipments and strong R&D capability, our laboratory is awarded as the main science and research development basement by China Construction Ministry.



Climate  
Simulation  
Laboratory

Physical  
Laboratory

Chemical  
Laboratory



## Technical Support & After-sales Service



### Professional Capability of Technical Support

Our company has a number of professional technical engineers to ensure the accuracy of engineering drawing and supply the professional designs, technical consults etc.

Jiangxi ALUTILE Building Materials CO., Ltd. possess a high-quality specialized technical team and project managing team, which will offer you the best solution about the building curtain wall all the time from preliminary scheme to projects design and management.

### Scientific Communication

By analyzing customers' personalized design scheme, offering service such as systematic technology analyzing and technology consulting etc., offering product configuration with different colors and product combination as per customer's requests.

### Scheme Optimize

By scientific methods as well as rigorous process, communicating with customers and considering together, offering reasonable aluminum solid panel and installation solution for its systematic technology.

### Technical Guidance

Professional technical staff evaluates project construction recommend, personalized design and construction plan, load and structure calculation, details-treatment design, construction and installation drawing, and installation guidance etc..

## Industry Status

Deputy director enterprise of aluminum composite panel branch of China Building Materials Association.  
One of the major drafter for the National standard of ACP  
Quality management training base for China ACP industry  
R&D base of China Construction Ministry Science and Technology Institute  
Key high-tech enterprises of National Torch Program  
National special grade tax credit rating enterprise



## Main Honor

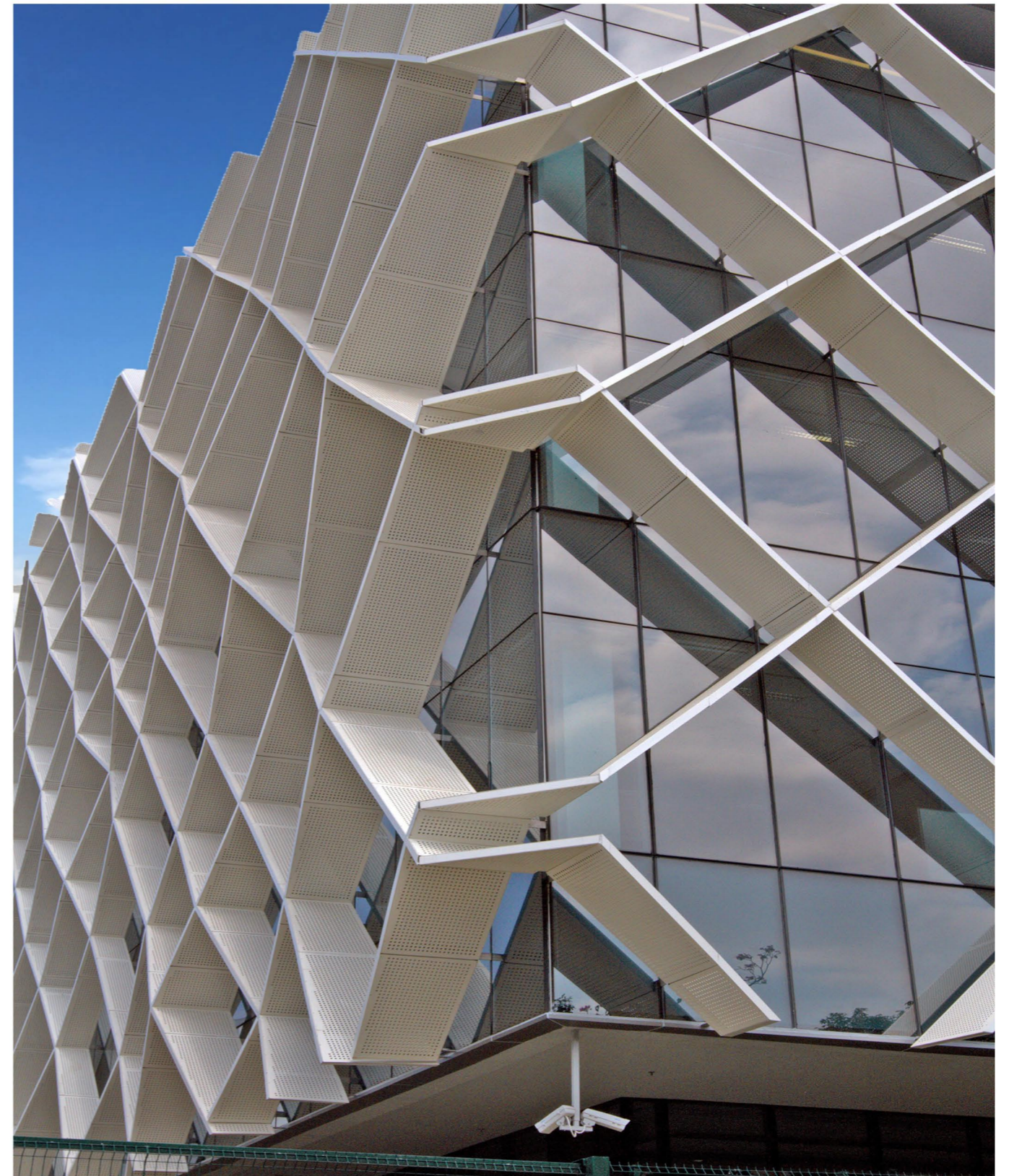
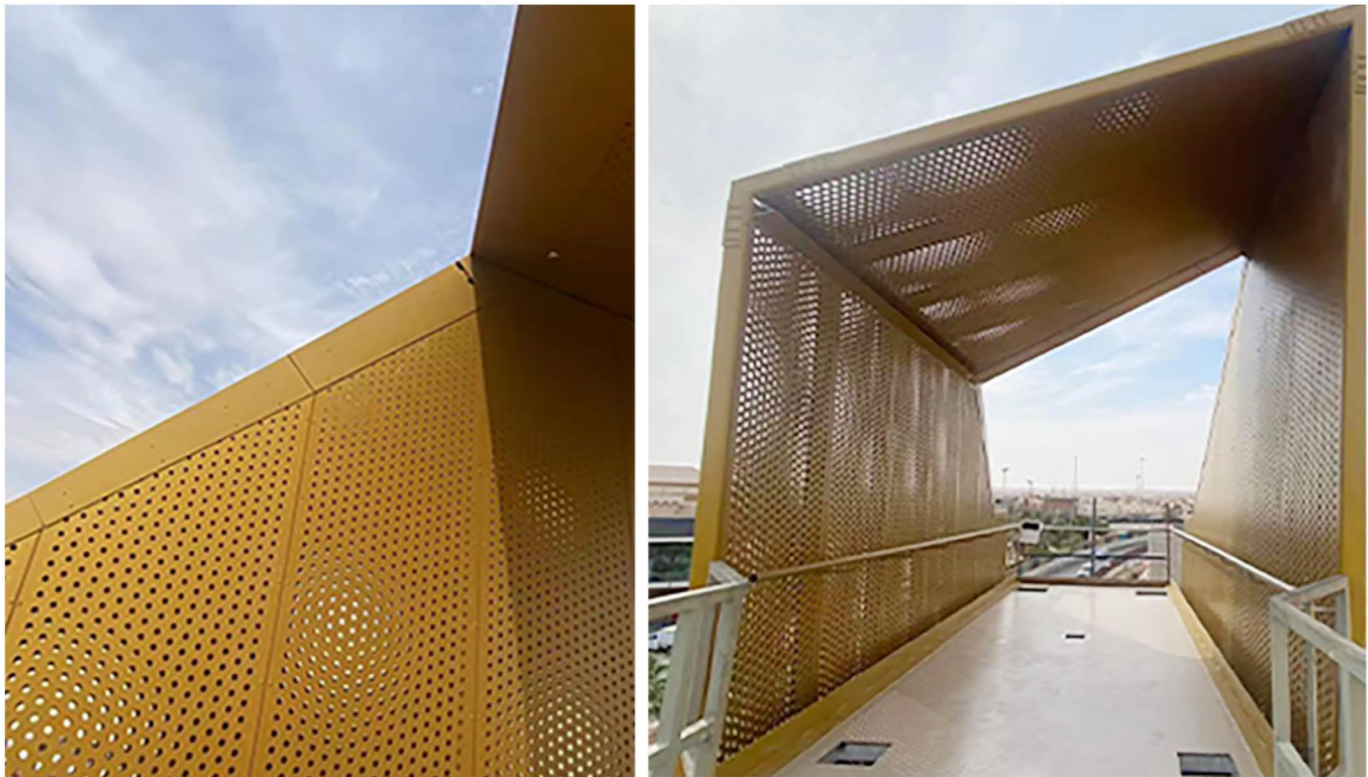
- Famous enterprise and well-known brand of China building materials industry (Issued by China construction ministry).
- Top ten brand of the national curtain wall industry (Issued by National Building Materials Bureau Standardization Institute)
- Famous brand in China ACP industry (Issued by China Construction Industry Association of aluminum plastic board)
- The advanced enterprise of maintaining consumers' rights and interests (Issued by the Jiangxi Consumer Association)
- Certificate of recommendation for Olympic construction materials ( issued by Editorial Committee of construction materials and equipment for Olympic Games.
- Top ten brands of China curtain wall building materials market ( issued by China Construction Material Enterprise Management Association, China Famous Brand Strategy Promotion Association)
- National quality reliable building materials products (Issued by China Building Materials Circulation Association)
- Famous brand for China building decorative materials (Issued by China Architectural Decoration Association)
- Technical innovation award of China's outstanding private science and technology enterprises (Issued by China private science and Technology Promotion Association)
- China architectural Application Innovation Award (Issued by China Architecture Association, National building material Trade Center)



**Riyadh Bus Station, Saudi Arabia**



**P2B Cycling Bridge, Saudi Arabia**



**BG Group, Brazil**



**Klatrehall I Trondheim, Norway**



**Radisson Hotel, Indonesia**



Guangzhou International Sports Arena

Project References



Jingdezhen Arts and Culture Center



Wanda Plaza



Nanchang Youth Palace



Changsha Meixi Lake Walking Bridge



Changsha International Convention and Exhibition Center



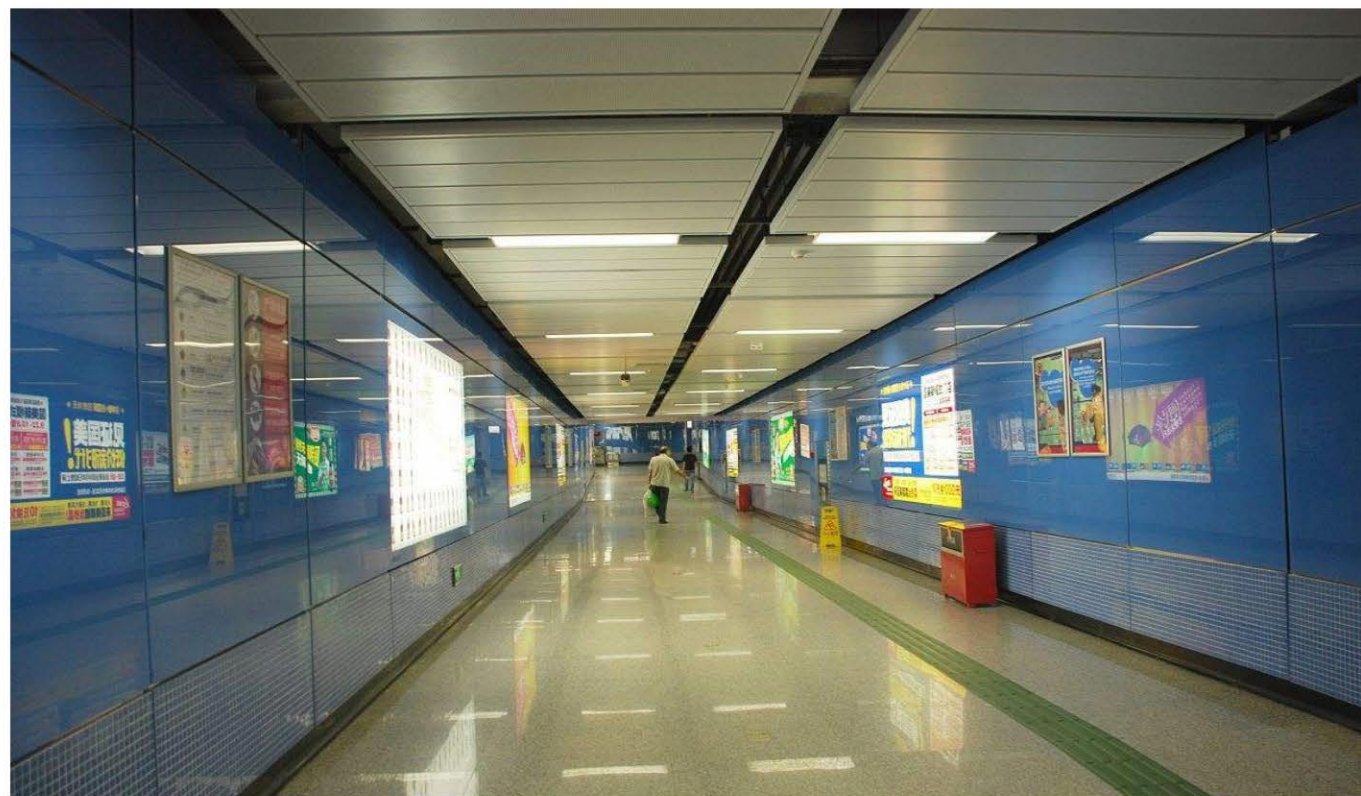
Project References



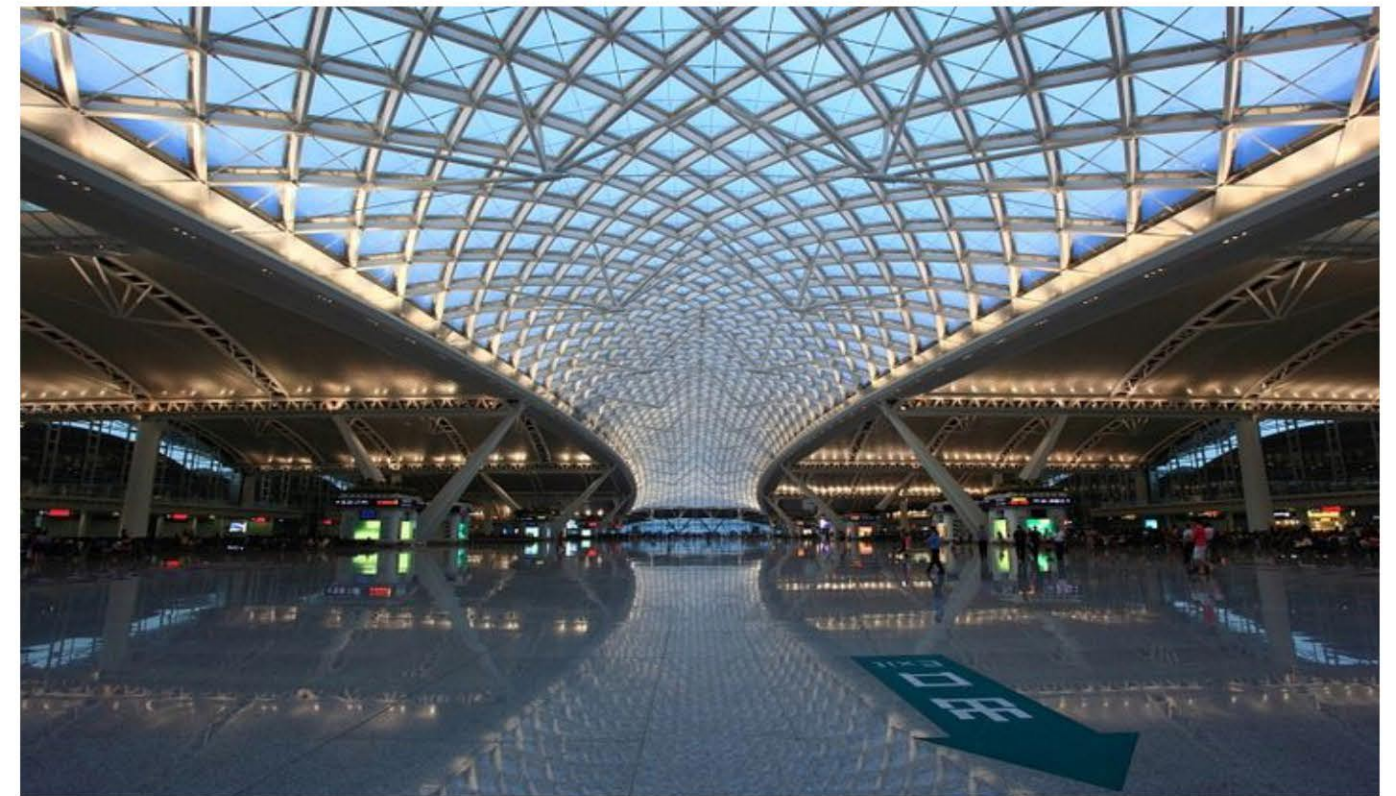
Guangzhou Asian Games City General Gymnasium



GuangZhou Children Hospital ZhuJiang New City Branch



GuangZhou Subway Station

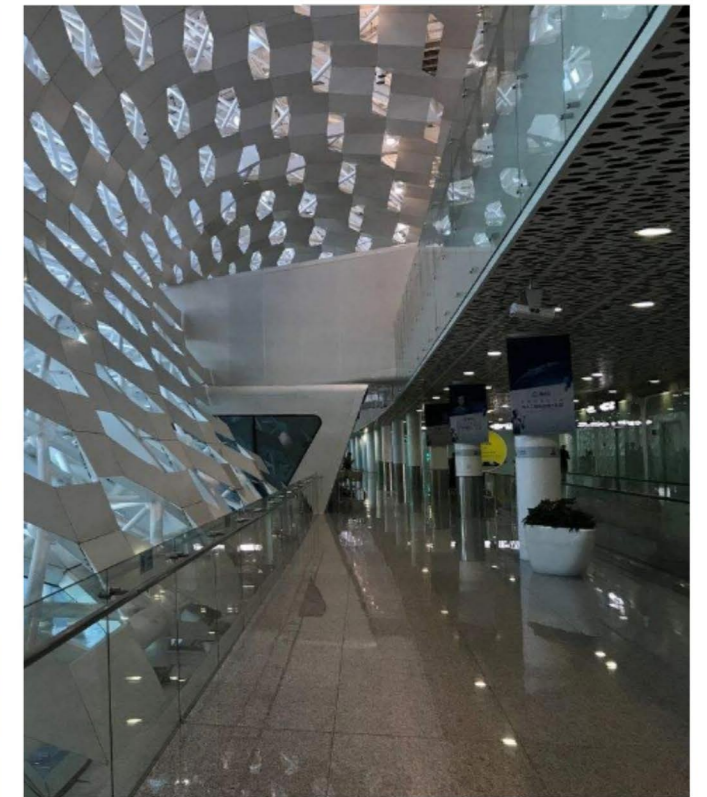


GuangZhou South Station

Project References



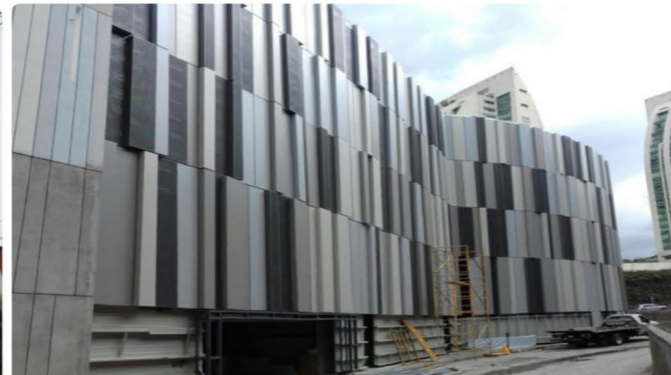
Shenzhen Airport



Shenzhen Airport



Hangzhou School



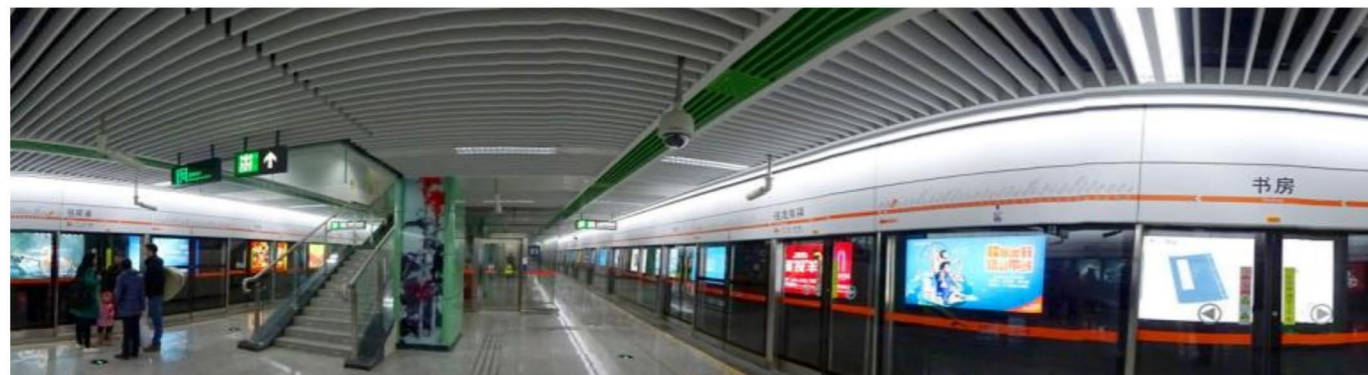
Interlomas Mall USA



Torreon Colombia



JingXing County Hospital Mansion



Chengdu Subway Station



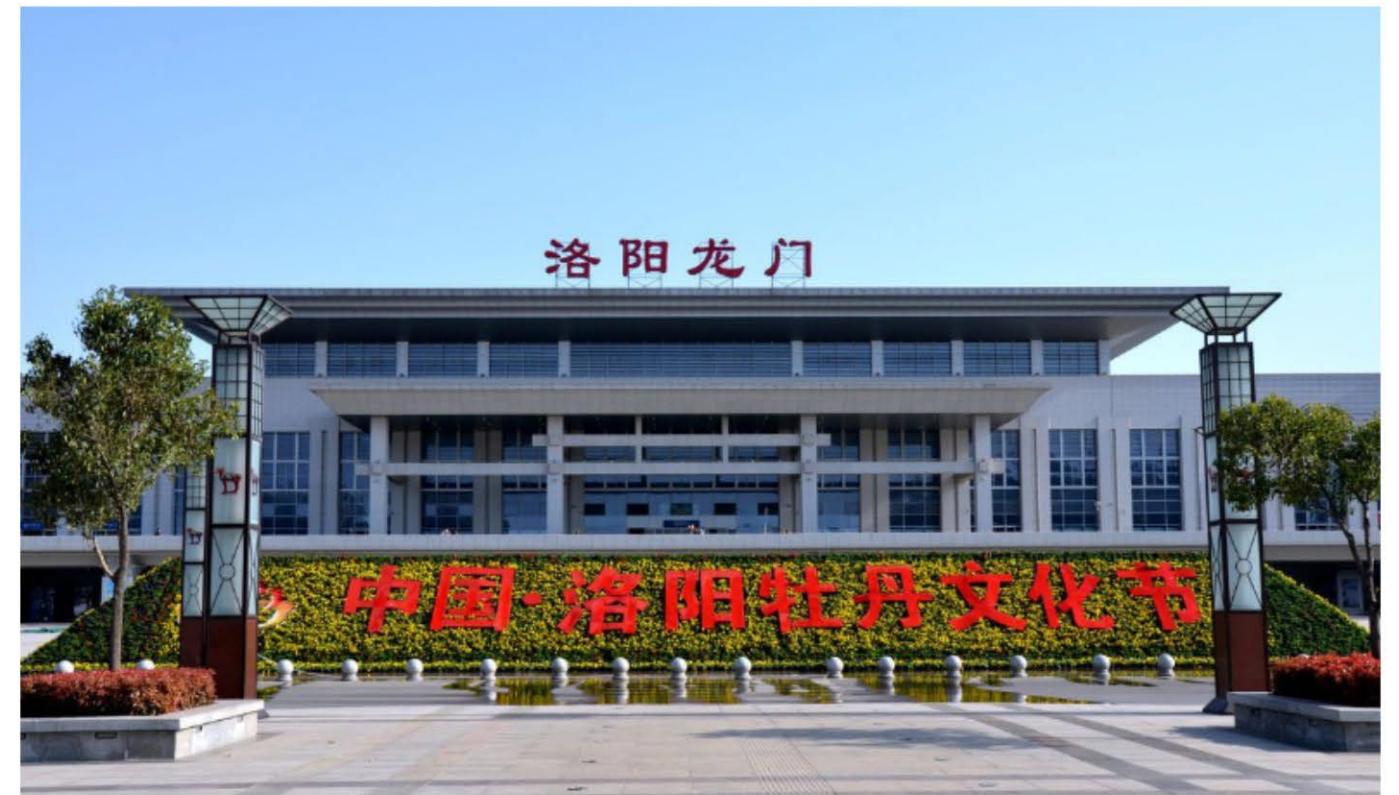
Xiamen Metro



Guiyang Comprehensive Bonded Zone



Binhai High-speed Railway station



LuoYang Longmen high-speed Rail Station

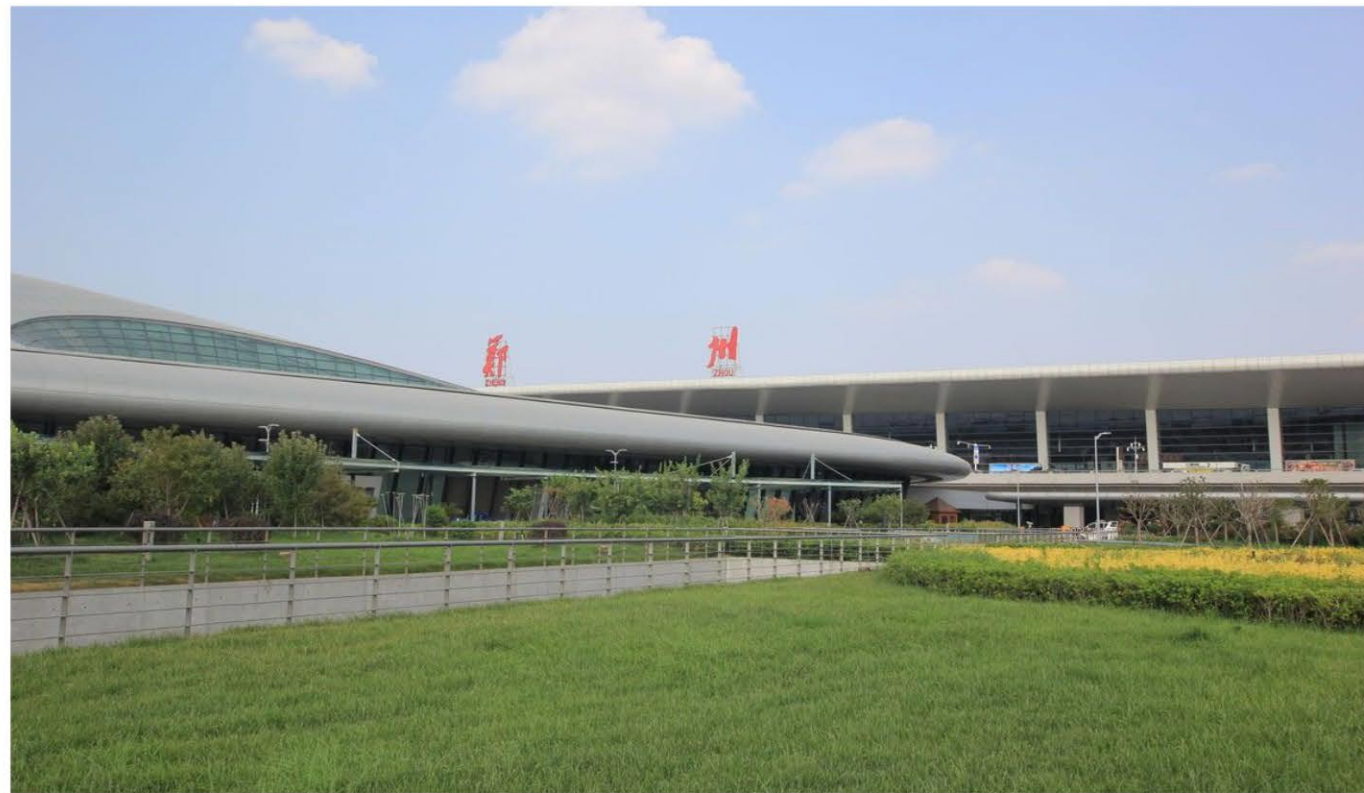


Oriental landscape



Qingdao Gymnasium

Project References



Zhenzhou Airport



Wuhan Mental Health Center



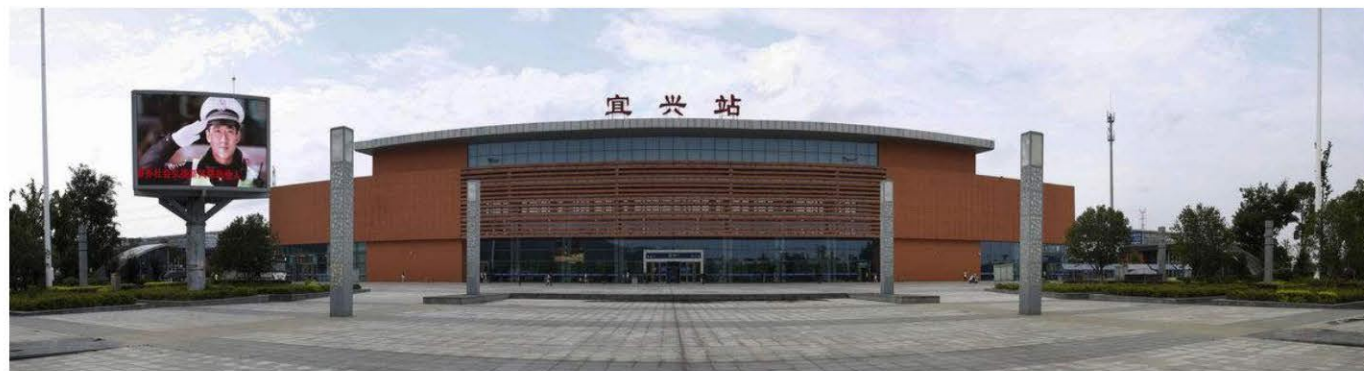
Fuzhou World Trade Building



SuZhou Nodal Region of North Station



Xiamen Wanda Plaza



YiXing Railway Station



YueYang East Station