



HONGTAI GROUP

Quality Creates Reliability



COMPANY PROFILE

PRODUCTION LINE

QUALITY CONTROL

CERTIFICATE

PROJECTS REFERENCE





Jiangxi Hongtai Group Co.,Ltd. was established in 1995, specialized in manufacturing ALUTILE brand Solid Aluminum Panel, Aluminum Composite Panel, 3A Aluminum Core Panel, Fire Resistance Aluminum Composite Panel, Thermal Insulation Sandwich Panel, Modular Container House etc. We are a joint venture including Chinese state-owned shares and Taiwanese capital .

Hongtai Group is a group company formed by several subsidiary company Jiangxi Alutile Building Materials Co., Ltd., Jiangxi Sukura New Materials Co., Ltd., Nanchang Hongtai Real Estate Co., Ltd., Jiangxi Hongtai Environmental Landscape Engineering Co., Ltd. and etc., which has three industrial parks which covers total area of 270,000 square meters and establish a industry development direction with 6 kinds of metal curtain wall system products.



In 2001, Hongtai Group adopted advanced equipment for Solid Aluminum Panel , such as advanced automatic spraying equipment and the most advanced furnace temperature control, liquefied gas combustion system and Germany pretreatment technology, and annual output reaches 2.4 million square meters for Solid Aluminum Panel.

As a leading foreign-invested High-tech enterprise in Jiangxi Province, the company has totally invested USD 20 million to import 6 advanced full automatic production lines; annual output reaches 3.6 million square meters for Aluminum Composite Panel.

Due to the superior quality, ALUTILE products have been exported to over 100 countries. You can be assured of the best quality and good after-sale services.



HISTORY

DEVELOPMENT PROCESS



- **ALUTILE WAS ESTABLISHED IN 1995.**
- **In 1998, ALUTILE WAS THE FIRST ENTERPRISE THAT RECEIVED ISO9001 & ISO14001 CERTIFICATE IN CHINA.**
- **IN 1999, ALUTILE WAS THE ENTERPRISE THAT LEADING THE DRAFTING OF CHINA NATIONAL STAND GB17748-1999.**
- **SINCE 2005, ALUTILE BECAME THE SPECIFIED AUTHORAIZED COOPERATIVE PARTNER FOR PPG DURANNAR POWDER & COIL COATING, AKZONOBEL TRINAR POWDER COATING,**



HISTORY

INDUSTRY DIRECTION

- New Materials Application + Creative Design + Construction Implementation
- + Operation Service Integration



■ Building Curtain Wall Series

(3A Aluminum core panel, Thermal Insulation Sandwich Panel)

■ Modular Container House

NOWADAYS

INDUSTRIAL PARKS

• HIGH-TECH HEADQUARTER



• ALUTILE PRODUCTION BASE



• SAKURA PRODUCTION BASE



PARTNERS

RAW MATERIAL



美国PPG公司
(世界500强)



瑞典贝格公司

• COATING

AMERICAN PPG & SWEDEN BECKERS



中国中铝集团
(中国500强)

• ALUMINUM COIL

CHINA ALCO



法国诺凡赛尔公司



POLI-FILM

德国宝丽菲姆公司

• PROTECTIVE-FILM

FRANCE NOVACEL & GERMANY POLIFILM



美国杜邦公司
(世界500强)

• HIGH MOLECULAR FILM

AMERICAN DUPONT



HONGTAI GROUP

Production Line for Solid Aluminum Panel

PRODUCTION

Production Line



■ Sheet-Metal Workshop



HONGTAI GROUP

PRODUCTION

Production Line



■ Sheet-Metal Workshop

PRODUCTION

Production Line



■ Aluminum Roll Storage Area



HONGTAI GROUP

PRODUCTION

Production Line



■ CNC Laser cutting Machine

PRODUCTION

Production Line



■ CNC Laser cutting Machine

PRODUCTION

Production Line



■ CNC Punching Machine



HONGTAI GROUP

PRODUCTION

Production Line



■ CNC Punching Machine



HONGTAI GROUP

PRODUCTION

Production Line



■ CNC Bending Machine

PRODUCTION

Production Line



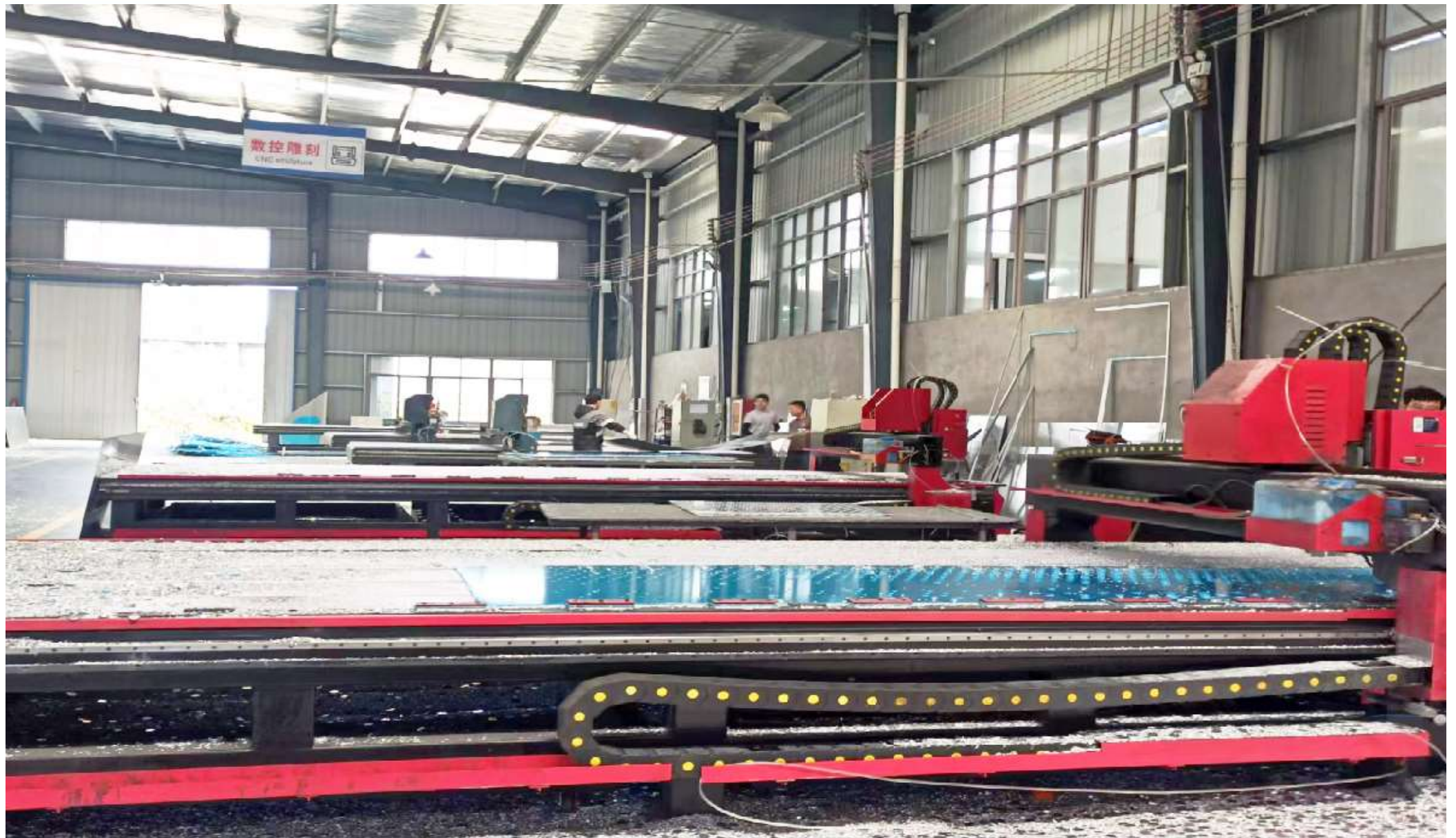
■ CNC Bending Machine



HONGTAI GROUP

PRODUCTION

Production Line



■ CNC Carving Machine

PRODUCTION

Production Line



■ Polishing

PRODUCTION

Production Line



■ The Chemosynthesis Line

PRODUCTION

Production Line



■ The Coating Line



HONGTAI GROUP

PRODUCTION

Production Line



■ The Coating Line



HONGTAI GROUP

PRODUCTION

Production Line



■ The Coating Line

PRODUCTION

Production Line



PRODUCTION

Production Line



Production Line for Aluminum Composite Panel

PRODUCTION

Production Line



PRODUCTION

Production Line



1

The Chemosynthesis Line

By the qualified chemical and advanced technology from Henkel Co., Germany, a covered film covers the surface with high density, making paint and metal rolls firmly adhere to each other.



2

The Precision Coating Line

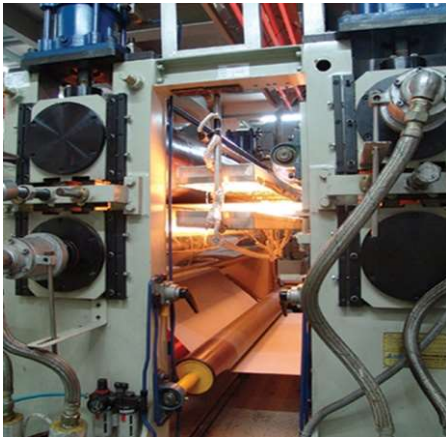
The line is precisely to coat the chemosynthesized rolls under sealed and dustless condition, according to the demands of customer by using an advanced multiple-roller reversal precision coating equipment.



3

The Continuous Thermal Compound Line

With American Dupont High Molecular Film, proper technology and strict quality control, we can produce aluminum composite panel with super peeling strength, which is superior to the quality indexes of imported panels in the same kind.



Fire Resistance A2 Product

3A Aluminum Core panel



3A PANEL

FOR EXTERNAL WALL

Aluminum Metal Wall (Roof) System
Professional Manufacturers

ALUTILE® 3A PANEL SERIES

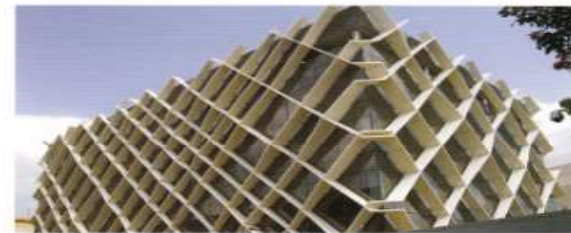


ALUTILE®
Since 1995



Outstanding Performance, Achievements in Architectural Decoration

ALUTILE® 3A Panel adopts high strength aluminum alloy 3003H14, which is as good as aluminum. The panel surface is coated with Kynar 500 PVDF paint that is produced by global famous company such as American PPG, Sankor Brothers. The character of coating can prevent the ALUTILE® 3A panel from being oxidized or AAMA & ASCA.



High Strength, structural stability and meet building material's requirement of light weight.

Compared with solid aluminum panel, ALUTILE® 3A panel has many advantages such as light weight, high-strength, high rigidity, etc. The multirum-shape core layer is distributed across the entire panel, this makes the 3A panel more stable, anti-bending & warping. Its wind-load resistance performance is much better than aluminum composite panel & solid aluminum panel, moreover it's not easy to deform and it assures large size panel's good fitness.

The most important advantage is the ratio between rigid and weight, ALUTILE® 3A panel is one of the best light building materials.

Superior Noise Reduction, Fire Resistance, Wind-load Resistance Performance

Each cell of the core is fully separated from each other to prevent the air flow, so ALUTILE® 3A panel has good performance in sound insulation.

Three layers of different alloy are composited, adopts mature Germany Polyner adhesive technology, ALUTILE® 3A panel's structural stability is better than honeycomb panel. ALUTILE® 3A panel is non-combustible material.



HONGTAI GROUP

3A PANEL

FOR EXTERNAL WALL



Advanced equipments ensure the accuracy of panel's specification and simplify the installation process

ALUTILE® 3A Panel adopts the international advanced imported equipment, top production technology to produce and control systems from American AS Company for production control. So ALUTILE® 3A Panel possesses extremely high flatness, non-deforming, more convenient installation on site.

Improve each performance by high standard quality control

ALUTILE® 3A Panel adopts PVDF roller coating aluminum panel as the top side, the coating process adopted the leading international precision coating technology of multi-roller reverse roller and ultra-thin wave infrared technology to control accurately the coating thickness and appearance quality and reach the best situation for the solvent resistance, hardness and flexibility.

Cooperate with the world's famous enterprises to make our product more durable

The coating base materials and other raw materials of ALUTILE® 3A panel are purchased from American PPG, China Aluminum group, Germany Henkel Company, French Ineos etc. ALUTILE® 3A panel owns the characteristics of full glossy, beautiful and durable, more abrasion resistant, anti-scratch, perfect UV resistance, acid & alkali resistance. ALUTILE® 3A panel is obviously cleaner and brighter than solid aluminum panel after long time exposure to the sun and rain or industrial waste gas pollution. ALUTILE® 3A panel is the best choice to replace solid aluminum panel, honeycomb panel and aluminum composite panel.



Excellent Quality, Create More Value for Global Customers

Application Range

- 1) Curtain Wall
- 2) Interior Decoration
- 3) Signboard
- 4) Building on ships
- 5) Indoor Partition and Commodity Showcase
- 6) Business use transport
- 7) Bus, Trains, Metro and Rail Transit Vehicles



ALUTILE® 3A Panel

ALUTILE® 3A Panel is composite material, the mushroom-shape core structure helps the panel to support itself's weight, so there is no need to add extra reinforcement tube on the panel.

ALUTILE® 3A Panel adopts buckle cover system, both hole glue-line system and unhide glue-line system are available. This kind of system can effectively avoid the UV influence on the flatness of 3A panel caused by heat expansion and cold contraction.

Being composite material, ALUTILE® 3A panel have many advantages such as light weight, high strength, large size, easy for installation, easy for maintenance, environmental friendly, excellent resistance to heat expansion and cold contraction.

vs.

Solid Aluminum Panel

It is necessary to add extra reinforcement tube on the panel if the width of solid aluminum panel is more than 1 meter or the length of solid aluminum panel is more than 2 meters. As the coefficient of thermal expansion for reinforcement tube and panel is different, the surface of solid aluminum panel will be uneven after several times change between hot and cold.

Solid aluminum panel could only utilize the glue-line and have to be fixed on the column, so the panel surface is easily warping because there is not enough space to release temperature stress.

Compared with ALUTILE® 3A panel, solid aluminum panel do not have these advantages.



HONGTAI GROUP

3A PANEL

FOR EXTERNAL WALL



About 3A Panel

ALUTILE® 3A Panel combines many excellent characteristics such as weather resistance, corrosion resistance, high strength, easy to process and long service life, etc.

Based on more than 20 years' technical experience in metal curtain wall (Roof) materials and the advanced capacity of developing curtain wall system, Jiangxi Alutile Building Materials Co., Ltd. take it as a mission to promote global metal curtain wall industrial upgrading, and devoted itself to the manufacture and application of ALUTILE® 3A Panel.

ALUTILE® 3A Panel synthesized the advantages of traditional solid metal panel and composite panel. By using multidrum-shape core structure, the porosity of ALUTILE® 3A Panel reached 45%-50%. Compared with honeycomb panel, the bonding technology of 3A panel is more mature. Since the bonding area is 5 times higher than honeycomb panel, its structural strength is higher and more stable. 3A panel possesses the advantages of light weight, high strength, good weather resistance of coating, easy to process, outstanding fire resistance character, high recovery rate of depreciation, etc. ALUTILE® 3A Panel has already overcome solid metal panels' shortcoming of cannot be processed on-site, it can be processed more conveniently and efficiently.

ALUTILE® 3A Panel possesses strong flexural property, also improved bending strength of materials, wind-load resistance and fatigue life of cyclic loading. It has a wide application space in curtain wall and roof material field. We will fully support you to achieve the successful application of this superior material.

Technical Support and After-sales Service

Jiangxi Alutile Building Materials Co., Ltd provides a curtain wall decorative system that truly meets customers' personalized demand, rather than a casually-formed product list. With a high quality professional team and a high quality project management team, Jiangxi Alutile Building Materials Co., Ltd provides the best solutions for building curtain wall. Our professionals will always stand by your side from the preliminary project plan to project design, project management, etc.



Scientific Communication

Provide systematic technical analysis, technical consultation service, etc.



Schemes Optimization

Provide reasonable systematic installation schemes.



Technical Guidance

Provide project evaluation for construction scheme, construction drawing, installation instructions, etc.



Integration Service

Provide high efficient and quick delivery, high quality packaging.



Service Commitment

Provide installation instructions, usage & maintenance guidance, online consultation, after-sales follow-up.

Our Company Has Obtained the Following Authority Certification



ALUTILE®
Since 1995

JIANGXI ALUTILE BUILDING MATERIALS CO., LTD.

Add: NO.1155, 2nd, Changren Road, State High-Tech Development Zone, Nanchang, Jiangxi, China
Tel: +86-791-88162180 / 88161917 / 88162161 Fax: +86-791-88162165
E-mail: alutile@alutile.com alutitechina@126.com www.alutile.com PC: 330396

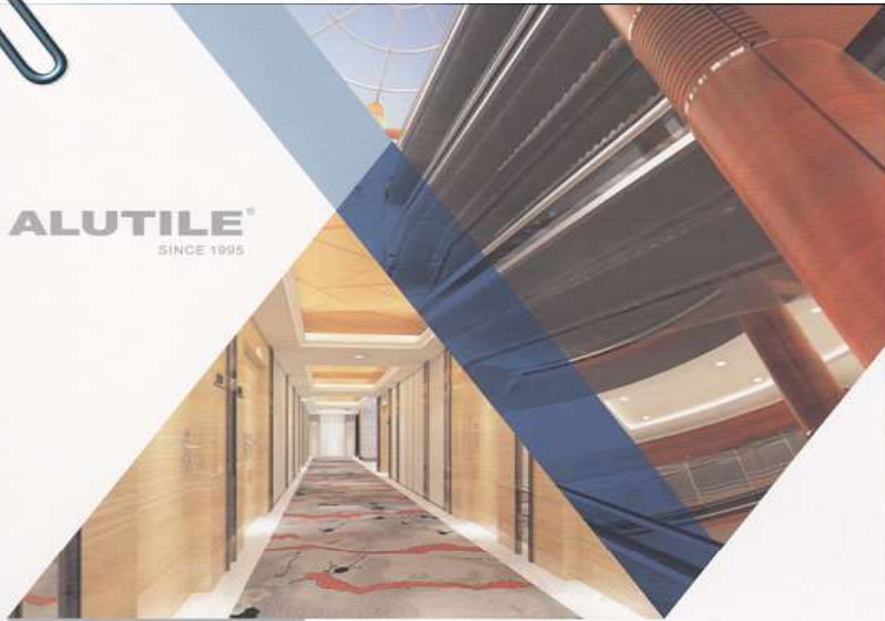


HONGTAI GROUP

3A PANEL

FOR INTERIOR WALL

ALUTILE[®]
SINCE 1995



3A Panel (Aluminum Core Panel)

All-metal material,
the best choice of high-end fabricated wall panel.

TiO₂ Coating
30 Years
Color Preserving
Full Dimension
Structure
50 years warranty



Environmental Protection, Zero Formaldehyde Release

Zero release of toxicity, such as formaldehyde, benzene, VOC and etc.. 3A panel's production meets the national environmental standards.



Stable Structure, High Evenness

3A panel has a high rigidity-to-weight ratio due to its multilayer metal structure, which makes it more stable and almost unbreakable. It could keep evenness even though the panel size is overlarge.



High Impact Resistance & Durable Wear Resistance

The shape of 3A panel's middle layer is hollow Ladder column, distributed evenly makes the panel could bear the highest pressure with the lightest weight. The impact and wear resistance is also much better than traditional wall decoration panel.



HONGTAI GROUP

3A PANEL

FOR INTERIOR WALL



Beautiful Decoration, Good Integrity

3A panel has rich colors, especially the natural wood grain color is available for different places and meet the interior decoration requirement.

Mildew Resistance & Antiseptic, Anti-radiation, Anti-static

The full metal structure of 3A panels can avoid the germ and mould, reduce the bacterial infections, and avoid the hurt caused by radiation and electrostatic.

Superior Fire-resistance Performance, In Accordance with the Fire Protection

The main materials of 3A panel are non-combustible material and fully meet the request of fire protection.



Simple Fabrication, Fast installation

It's easy to move and the superior fabrication performance creates various styles. Industrial fabrication and fast installation, it can save labor, time and money by quick assembling at construction site.



Easy wash and maintain

Perfect self-cleaning, wash by the neutral detergent or water. Keep the panel clean as new for long time.



• Airport, high-speed railway, metro, light rail, museums and archives, conference and exhibition center, commercial complexes, high-grade office buildings, hotels and other buildings interior wall decoration and over length strip (3.6m) for ceiling.



• First choice for functional-requirement machine room, medical operating room, precise instrument room, database's interior and exterior decoration.
• Special decoration for High-speed railway's carriage, yacht, ship's interior decoration.



3A PANEL

FOR INTERIOR WALL

Processing Method

Simply used processing tools for timber or metal to cut, saw, mill, fold, bend into arc & reverse arc, small radius corner, inside and outside corner, right angle etc. various shape.



Cutting

3A panel can be cut into various shapes with water jet propeller, profiling milling machine, shaping saw and curving saw.



Boring-milling

Through boring- milling processing tools to complete milling, drilling, boring etc. Please note that pad is necessary for all tools.



Drilling

Panel can be drilled by twist drill which usually used for drilling aluminum and plastic.



Bending

Through bending desk or brake-press lathes to finish, bending. Inner diameter can be about 10 times of panel thickness.



Riveting

Use ordinary equipment, rivet or blind rivet to finish riveting. Need to consider thermal expansion when used for outdoors.

Our Certificates



CE Certificate



SGS Test Report



Intertek Test Report



ASTM Standard Test



BS Standard Test



FHWA



ISO9001/ISO14001 System Certificate



International Astronautical Federation

JIANGXI ALUTILE BUILDING MATERIALS CO., LTD.

www.alutile.com

Add: No.1155, 2nd Chuangxin Road, State High-Tech. Development Zone, Nanchang, Jiangxi, China. PC: 330096
Tel: +86-791-88162180/88161917/88162161 Fax: +86-791-88162165 E-mail: alutile@alutile.com; alutilechina@126.com

Materials and technology may improve without any written notice. Copyright Reserved. 2017 Version



3A Panel Define Good Curtain Wall Panel

Although compounded by three layers of aluminum sheet, over large panel surface is still with perfect evenness. Splicing between panels is natural and smooth, varied decorative face shows multiple wall expression effect. 3A panel possess the advantages of light weight, high strength, fire-resistance and moisture-resistance, pollution-free, prolonged wear-resisting, fast splicing, easy to maintain etc. Especially its middle layer uses concave-convex empty drum structure to decrease thermal conductivity rate and increase a certain thermal bridge partition and sound insulation effect. It's favorite first choice for all kinds of public buildings and commercial buildings interior decoration materials.



HONGTAI GROUP

QUALITY CONTROL

Hongtai Group carry out the strict inspection for each batch products to ensure conform to China National Standard.

1. Professional Quality Control Department: Responsible for the inspection of coming raw materials, production process control and finished products before leaving factory.
2. Testing laboratory: Using the advanced equipments to test the performance of each batch of raw materials, finished products to ensure compliance with China National Standard.
3. Third party testing: Send the samples to third party to get the approval and ensure products complies with American and European International standards.
4. Keep records of each batch products for future quality tracking.



All the raw materials and finished products are strictly tested by advanced equipments imported from America, Germany and Japan.



No.	Test equipment	Item
1	QUV Machine	Weather
2	Salt Spray Tester	Corrosion Resistance
3	Color Difference Tester	Color Difference
4	Universal Testing Machine	Physical Properties (tensile, compressive, shear)
5	Microscope	Coating
6	Mirror Angle Gloss Meter	Gloss
7	Standard Color Box	Coating Color
8	Solvent Resistance Machine	Solvent Resistance
9	Coating Flexibility Tester	Coating Flexibility
10	Temperature Cycle Tester	Temperature
11	Coating Thickness Gauge	Coating Thickness
12	Pencil Hardness Tester	Pencil Hardness



No	Equipment name	Specification/ Type	Qty/ Set	Usage
1	Multi-station CNC punching machine	HPE-3078-40LA2	2	Punching panels according to programmed shape
2	Multi-station CNC punching machine	HPE-3058-40LA2	3	Punching panels according to programmed shape
3	CNC bending machine	PBH-110/4100-4C	9	Bend panels as requirements
4	CNC bending machine	PBB-220/6200-4C	9	Bend panels as requirements
5	Plate Shearing Machine	LGS-6X6100	1	Shearing panels as requirements
6	Hydraulic pendulum Plate Shearing Machine	QC12Y-4*4000	1	Shearing panels as requirements



7	CNC cutting machine for aluminum panels	FD-2350	3	Cutting panels as requirements
8	CNC bending machine	PAM-100/4100	4	Bend panels as requirements
9	CNC bending machine	PAM-160/4200	4	Bend panels as requirements
10	Electro-hydraulic synchronous CNC carving machine	TAM-100/4100	6	Carving panels as requirements
11	CNC laser cutting machine	8(M)	2	Laser cutting panels as requirements
12	Optical fiber laser cutting machine	6(M)	1	Laser cutting panels as requirements



13	Laser cutting machine(double side)	8(M)	2	Laser cutting panels as requirements
14	Hyperbolic mould free press mould machine	/	1	3D shape as requirements
15	PVDF painting line	/	1	Panel coating
16	Powder coating line	/	1	Panel coating
17	Water-based painting spray line	/	2	Panel coating



Main Equipment Subtotal list:

Carving Machine 6PC

Laser Cutting 5PC

Bending Machine 26PC

Punching Machine 5PC

Coating Line 4PC



CERTIFICATES



原件复制

VERIFICATION OF CPD COMPLIANCE

AC Auger Testing Certification

Certificate No. AC/0707001

Applicant : JIANGXI HONGTAI INDUSTRIAL GROUP CO., LTD.

Address of Applicant : NO.116, GAOXIN 5TH ROAD, STATE HIGH-TECH DEVELOPMENT ZONE, NANCHANG, P.R.CHINA

Product Description : **ALUTILE**™ ALUMINUM COMPOSITE PANEL

Type and Model : 3mm, 4mm.

Technical Construction File Referenced No./Rev : STT(07)-C743-CPD

Codes/Standards Applied : BS EN 438-2-5; ISO 2360; BS 6496:1984; BS 3900; DIN 53315

Date Of Issuance : July 6, 2007

Remarks : This Certificate Is Only Valid For The Equipment And Configuration Described, And In Conjunction With The Test Data Detailed Above.

Conclusion of Assessment :
We Hereby Confirm That The Technical Construction File And Manufacturing, Inspection And Testing Processes For Above Mentioned Equipment Comply With The Essential Safety Requirements Of EU Construction Products Directive 89/106/EEC & Applied Codes And Standards.

Chief Assessor: 
Auger Certification & Testing Service LTD.

CE

AUGER CERTIFICATION & TESTING SERVICE LTD.
SUITE 8525, 16-18 CIRCUS ROAD, ST JOHN'S WOOD, LONDON, NW8 6PG
info@augeruk.org







  中国认可
机构
编号
TESTING
CNAS-L6550

检 测 报 告
TEST REPORT

报告编号: WT2023001801165

委托单位: 江西雅西泰建材股份有限公司
Entrusted by: Jiangxi Axiote Building Materials Co., Ltd

样品名称: 建筑装饰用铝单板
Sample Name: Aluminum panels for building decoration

检测类别: 盐雾检测
Test Type: Entrustment test

中国国检测试控股集团股份有限公司
China Testing & Certification International Group Co., Ltd.
国家建筑材料测试中心
National Research Center of Testing Techniques for Building

 WT2023001801165



中国国检测试控股集团股份有限公司
 (China Testing & Certification International Group Co., Ltd.)
国家建筑材料测试中心
 (National Research Center of Testing Techniques for Building Materials)
检测报告
 (Test Report)

报告编号: **WT2022091801365** 第 1 页 共 4 页

样品名称 Sample Name	建筑装饰用铝单板 Aluminum panels for building decoration	检测类别 Test Type	非破坏性 Destructiveness test
委托单位 Applicant	江苏恒泰新材料股份有限公司 Jiangsu Hengtai Building Materials Co., Ltd.	商 标 Brand	
生产厂家 Manufacturer	江苏恒泰新材料股份有限公司 Jiangsu Hengtai Building Materials Co., Ltd.	样品描述 Sample Description	满足检测要求 Meet the testing requirements
送检日期 Receiving Date	2022年09月24日 September 24, 2022	样品数量 Quantity of samples	300mm*300mm 12 Pcs. 150mm*100mm 15 A4 Pcs. 100mm*400mm 3 A4 Pcs.
生产日期 (批号) Production Date/Batch No.	2022年09月14日 September 08, 2022 /ELT-A1-20220914-082	型号规格 Model/Size	氟碳漆喷涂铝单板室外用 Outdoor triple coating of FC liquid spraying system
检测方法 Test methods	参照相应项目的技术规范进行检验。 The method for the test items are detailed in the data pages.	检测日期 Test Performing Date	2022年09月24日-28日 September 24-28, 2022
判定标准 Judgment Standard	GB/T 23443-2009《建筑装饰用铝单板》 GB/T 23443-2009 Aluminum panels for building decoration		
检测项目 Test items	详见检测报告。 Test items are detailed in data pages.		
检测结果 Test item	*注检测, 该样品此号规格合格的检测报告见附件3, 其余检测项目的检测结果符合 GB/T 23443-2009《建筑装饰用铝单板》中室外用氟碳漆喷涂铝单板的性能要求。 Upon testing, the test result of glass tolerance is detailed in page 3, other test results comply with the requirements of GB/T 23443-2009 for Outdoor triple coating of FC liquid spraying system. Test result are detailed in data pages. 签发日期: 2022年09月11日 		
附注 (Remarks):	[其他空白 Blank]		

批准:  审核:  编制: 刘燕燕

检测机构地址: 北京市通州区管庄东里1号 电话: 010-31167681 邮编: 100024



中国国检测试控股集团股份有限公司
 (China Testing & Certification International Group Co., Ltd.)
国家建筑材料测试中心
 (National Research Center of Testing Techniques for Building Materials)
检测报告
 (Test Report)

报告编号: WT2022091801165 第 2 页 共 4 页

序号 No.	检测项目 Test Items	标准要求 Requirements of Standard	检测情况 Test Results	单项结论 Individual Conclusion	检测方法 Test methods
1	外观质量 Appearance	板材表面应平整, 无毛刺, 划痕, 板材不允许有凹坑等, 外观应整洁, 色泽基本一致, 无明显色差, 且饰面不得有明显污渍, 饰面应平整无划痕, 无明显色差, 漆膜应无脱落、开裂、起泡、夹杂物及其他表面缺陷。 The plates' edge shall be not smoothly, and be free of burr and checked edge, and the plates are not allowed with peeling-off. The appearance shall be neat, the drawing is clear, there is with substantial agreement, but without apparent warping. The exposed surface shall not have apparent indentation, imprint and pocking. The plates are free of apparent color differences. The coating shall be free of flow mark, cracking, air bubble, inclusion or other surface defects.	板材表面平整, 无毛刺, 划痕, 板材无凹坑等, 外观整洁, 色泽基本一致, 无明显色差, 漆膜无脱落、开裂、起泡、夹杂物及其他表面缺陷。 The plates' edge are smoothly, no burr, no checked edge. The appearance is neat, no indentation, imprint and pocking. The plates are free of apparent color differences. The coating is no flow mark, cracking, air bubble, inclusion or other surface defects.	符合 Pass	GB/T 23441-2009 3.2 GB/T 9706-2004

检测机构地址: 北京市朝阳区望京东里1号 电话: 010-81167088 邮编: 100024

中国国检测试

Solid Aluminum Panel Test Report

中国国检测试控股集团股份有限公司
 (China Testing & Certification International Group Co., Ltd.)
国家建筑材料测试中心
 (National Research Center of Testing Technology for Building Materials.)
检测报告
 (Test Report)

报告编号: WTJ20220911001365 第 3 页 共 4 页

序号 No.	检测项目 Test Item	标准要求 Requirements of Standard	检测结果 Test Results	单项结论 Individual Evaluation	检测方法 Test method
1	膜厚 Coating thickness	平均值 Avg ≥48μm 最小值 Min ≥34μm	平均值 Avg: 45.8μm 最小值 Min: 31.1μm	符合 Pass	GB/T 23443-2009 7.4 GB/T 4957-2003
2	光泽度偏差 Gloss tolerance	光泽度 < 30 Gloss value < 30	偏差 Tolerance ±5	符合 Pass	GB/T 23443-2009 7.5 GB/T 8754-1997
		光泽度 < 70 Gloss value < 70	偏差 Tolerance ±7		
		光泽度 < 70 Gloss value < 70	偏差 Tolerance ±10		
4	附着力 Adhesion	干式 Dry adhesion	附着力等级 Cross-cut Rating 0	符合 Pass	GB/T 23443-2009 7.6.1 GB/T 9286-2021
		湿式 Wet adhesion	附着力等级 Cross-cut Rating 0	符合 Pass	
		沸水 Boiling water adhesion	附着力等级 Cross-cut Rating 0	符合 Pass	
5	铅笔硬度 Pencil hardness	≥1H	1H (中国标准 GB 6733-2006 H/A Pencil)	符合 Pass	GB/T 23443-2009 7.7 GB/T 6733-2006

检测机构的地址: 北京市通州区管庄东里1号 电话: 010-81167681 邮编: 100024

检测日期: _____

Solid Aluminum Panel Test Report

中国国检测试控股集团股份有限公司
 (China Testing & Certification International Group Co., Ltd.)
国家建筑材料测试中心
 (National Research Center of Testing Techniques for Building Materials)
检测报告
 (Test Report)

报告编号: WT2022H01001365 第 4 页 共 4 页

序号 No.	检测项目 Test Item	标准要求 Requirements of Standard	检测结果 Test Results	单项结论 Individual Conclusion	检测标准 Test standard
6	耐盐性 (5%NaCl) Hydrochloric acid resistance	无变化 Unchanged	无变化 Unchanged	符合 Pass	GB/T 23443-2009 7.8.1.1
7	耐碱酸 Alkali acid resistance	无起泡等变化, 占面积≤0.05	无起泡等变化, 占面积≤0.05	符合 Pass	GB/T 23443-2009 7.8.1.2
8	砂浆粘结 Mortar resistance	无变化 Unchanged	无变化 Unchanged	符合 Pass	GB/T 23443-2009 7.8.2
9	耐溶剂性 Solvent resistance	无脱落 Resin leakage prevention	无脱落 Resin leakage prevention	符合 Pass	GB/T 23443-2009 7.8.2.1
10	耐磨性 Abrasion resistance	≤25L/gm	7.5L/gm	符合 Pass	GB/T 23443-2009 7.8.2.2 B Annex B
11	冲击韧性 Impact resistance	正反面材料无裂纹, 涂层面无脱落和开裂	正反面材料无裂纹, 涂层无脱落和开裂	符合 Pass	GB/T 23443-2009 7.11 GB/T 1732-2013

备注 (Remarks): 1. 检测标准 Test Spec: 中国国检23443.

— 本报告结束 —

检测机构的地址: 北京市朝阳区望京东里1号 电话: 010-51167681 邮编: 100024



ARKEMA INNOVATIVE MATERIALS FOR A SUSTAINABLE WORLD

KYNAR500[®]

POLYVINYLIDENE FLUORIDE BASED COATINGS

LICENSE CERTIFICATE



PPG COATINGS (TIANJIN) CO. LTD.

Has successfully met all requirements set forth by Arkema Inc. and has been licensed to produce Duranar[®] coatings containing a minimum 70% KYNAR 500[®] PVDF resin for the year 2024.

A handwritten signature in black ink, appearing to read 'Paul Lavallee', written over a thin horizontal line.

Paul LAVALLEE
GLOBAL MARKET MANAGER

Kynar[®] and Kynar 500[®] are registered trademarks belonging to Arkema Inc. Coating formulations based on Kynar 500[®] PVDF resin can only be supported by Arkema licensees.



HONGTAI GROUP



认证客户证书 APPROVED APPLICATOR CERTIFICATE

兹证明
THIS ACKNOWLEDGES THAT

江西雅丽泰建材股份有限公司
Jiangxi Alutile Building Materials Co.,Ltd.

已成功验证该客户有能力根据PPG涂装规范应用
建筑卷材涂料, 特此认证为授权客户。

HAS SUCCESSFULLY DEMONSTRATED THE ABILITY TO APPLY
COIL COATINGS ACCORDING TO PPG INDUSTRIES SPECIFICATIONS
AND IS HEREBY RECOGNIZED AS A PPG APPROVED APPLICATOR.

授权编号 CL20240105

Authorization No: CL20240105

有效期 2024年1月1日至2024年12月31日

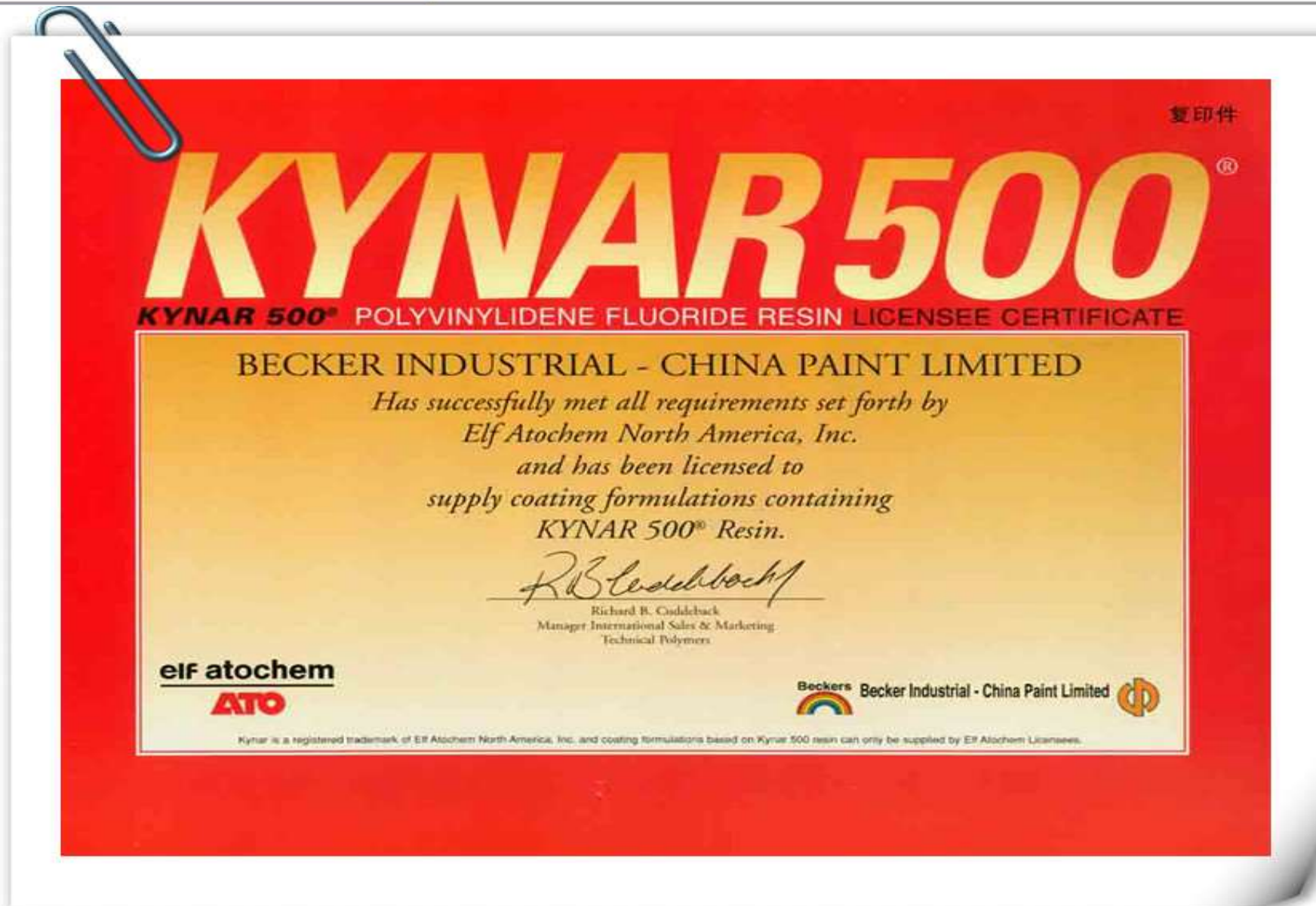
Validity January 1, 2024 - December 31, 2024

Terry Li Zhi Wu,
Business Director, Greater China

PPG 涂料(天津)有限公司
PPG Coatings (Tianjin) Co., Ltd



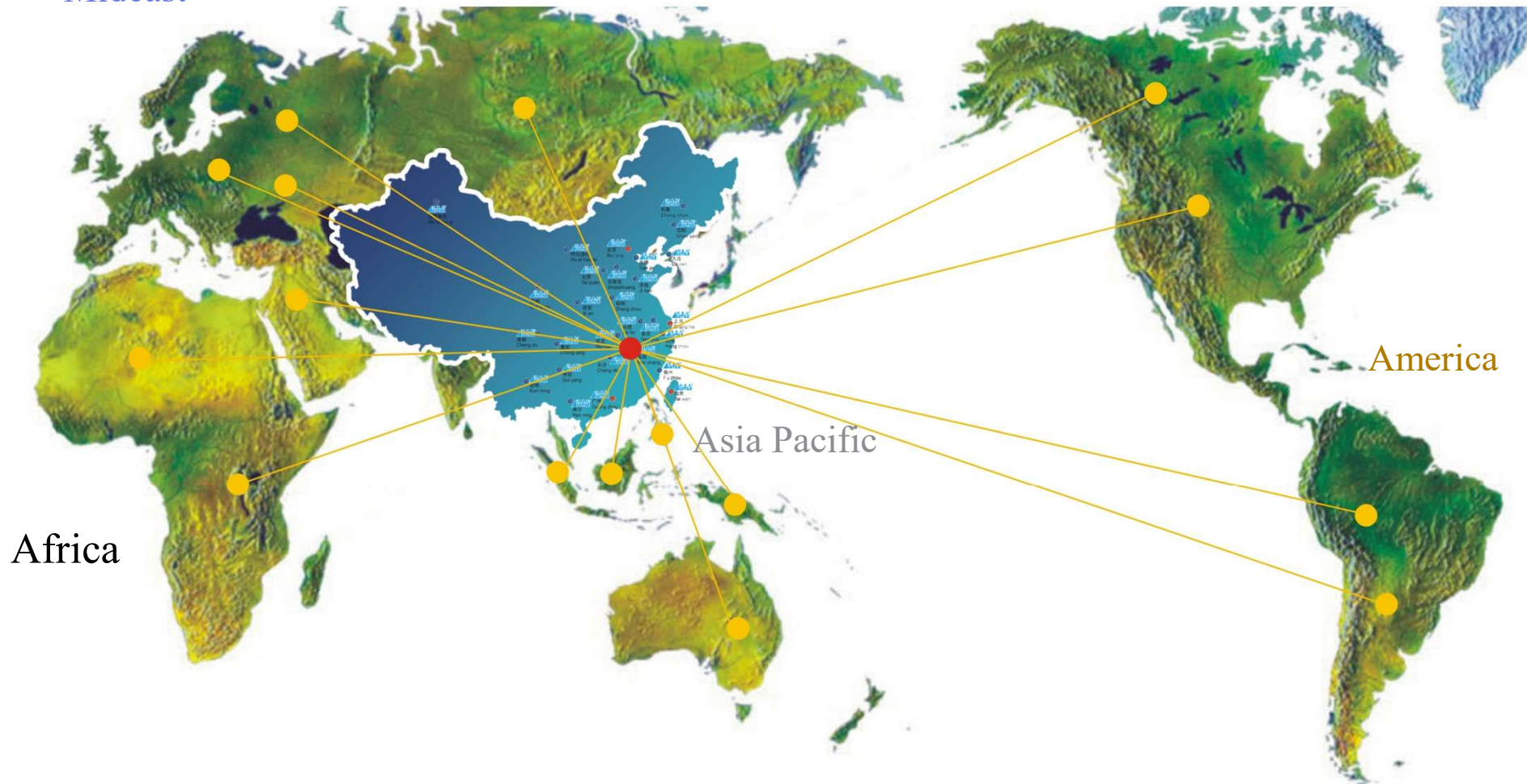
HONGTAI GROUP



Customers

Widely used in over 100 countries.

Europe,
Mideast



Africa

Asia Pacific

America



HONGTAI GROUP

ALUTILE

Project References

- **1 Airport & Stadium**
- **2 Public Facilities**
- **3 Tower & Hotel**
- **4 Commercial & Residential Building**
- **5 Showroom & Petrol Station**



1. Airport & Stadium



www.alutile.com

■ Najran Airport, Saudi Arabia



■ Yanbu Airpot, Saudi Arabia



■ Sydney International Airport, Australia



■ Asalouye Airport, Iran



■ Brasilia Airport, Brazil



■ Tocumen International Airport, Panama



■ Nuevo Airport El Dorado CAC. Bogotá, Colombia



■ Nuevo Airport El Dorado CAC. Bogotá, Colombia



■ Beijing Capital International Airport, China



■ Shenzhen Airport, China



■ Zhengzhou New Airport, China



■ Fonte Arena, Brazil



■ Arena Jaraguá, Brazil



■ Guangzhou International Sports Arena



■ Shijinshan Olympic Stadium, Beijing, China



■ Sichuan Jianyang Stadium, China



■ Changsha International Exhibition Centre, China



■ Sangyong Hall, China



2. Public Facilities



www.alutile.com

■ Riyadh Sports Boulevard Cycling Bridge, Saudi Arabia



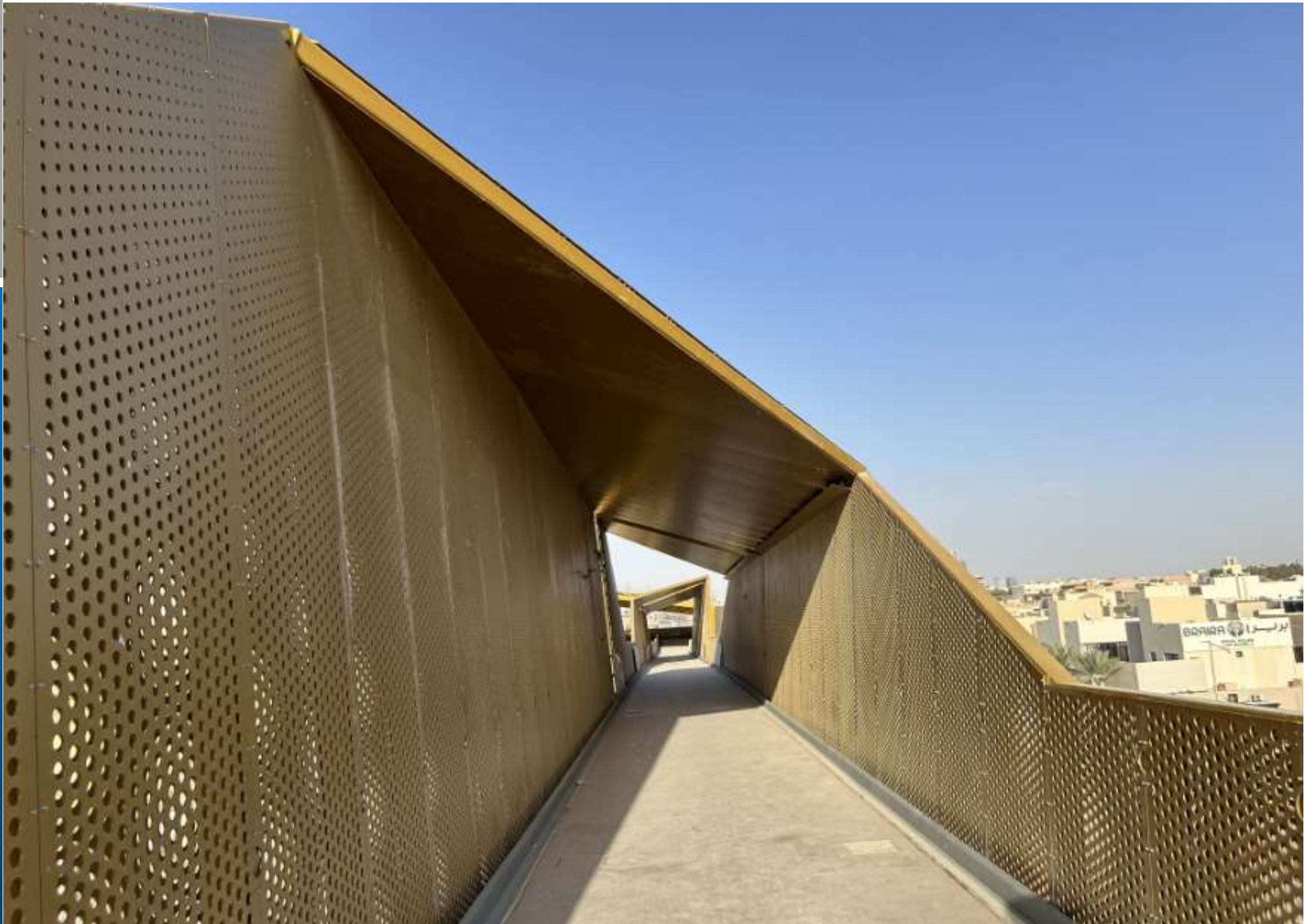
■ Riyadh Sports Boulevard Cycling Bridge, Saudi Arabia



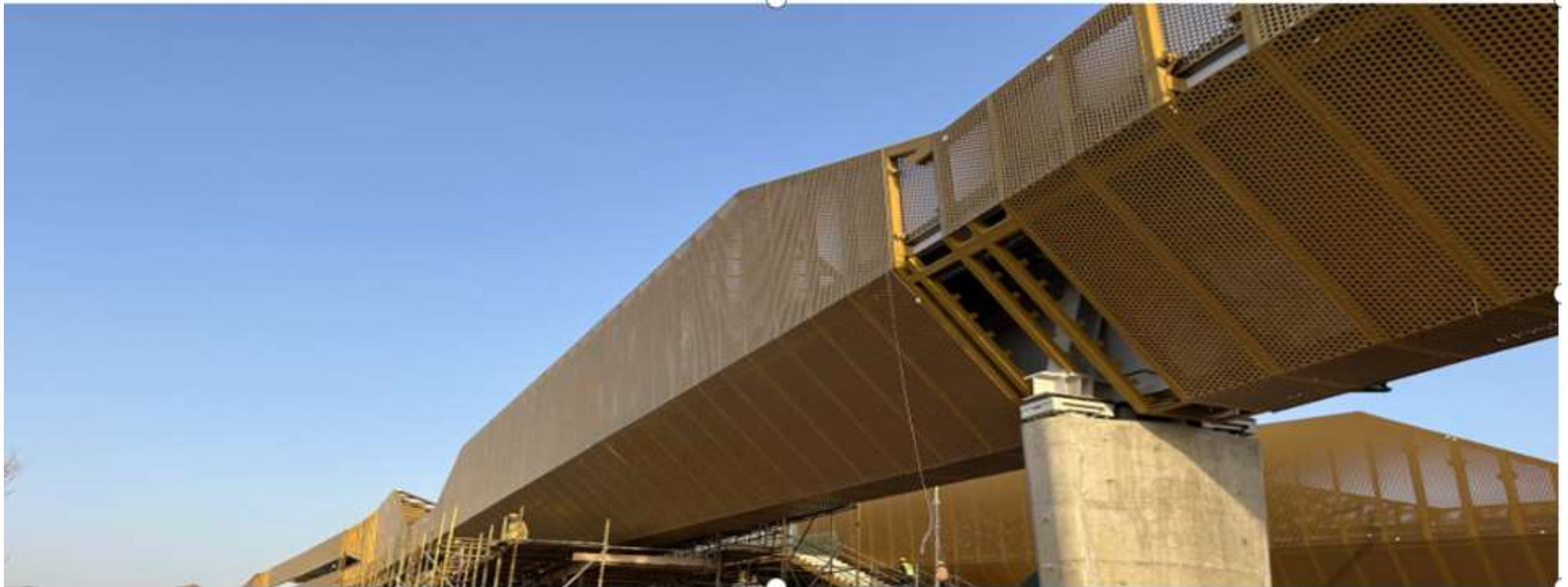
■ Riyadh Sports Boulevard Cycling Bridge, Saudi Arabia



■ Riyadh Sports Boulevard Cycling Bridge, Saudi Arabia



Riyadh Sports Boulevard Cycling Bridge, Saudi Arabia



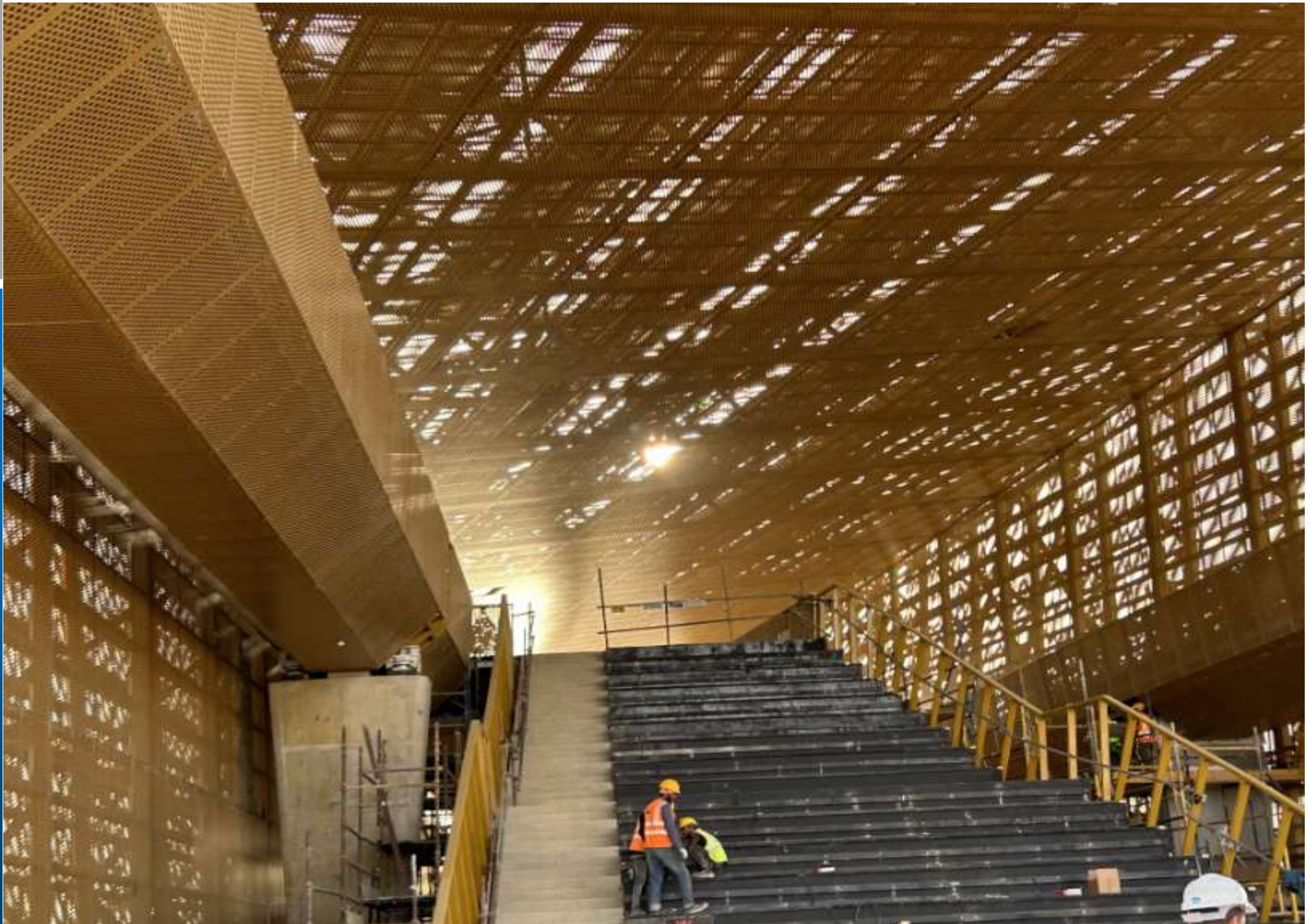
■ Riyadh Sports Boulevard Cycling Bridge, Saudi Arabia



■ Riyadh Sports Boulevard Cycling Bridge, Saudi Arabia



■ Riyadh Sports Boulevard Cycling Bridge, Saudi Arabia



■ Riyadh Bus Rapid Transit Project, Saudi Arabia



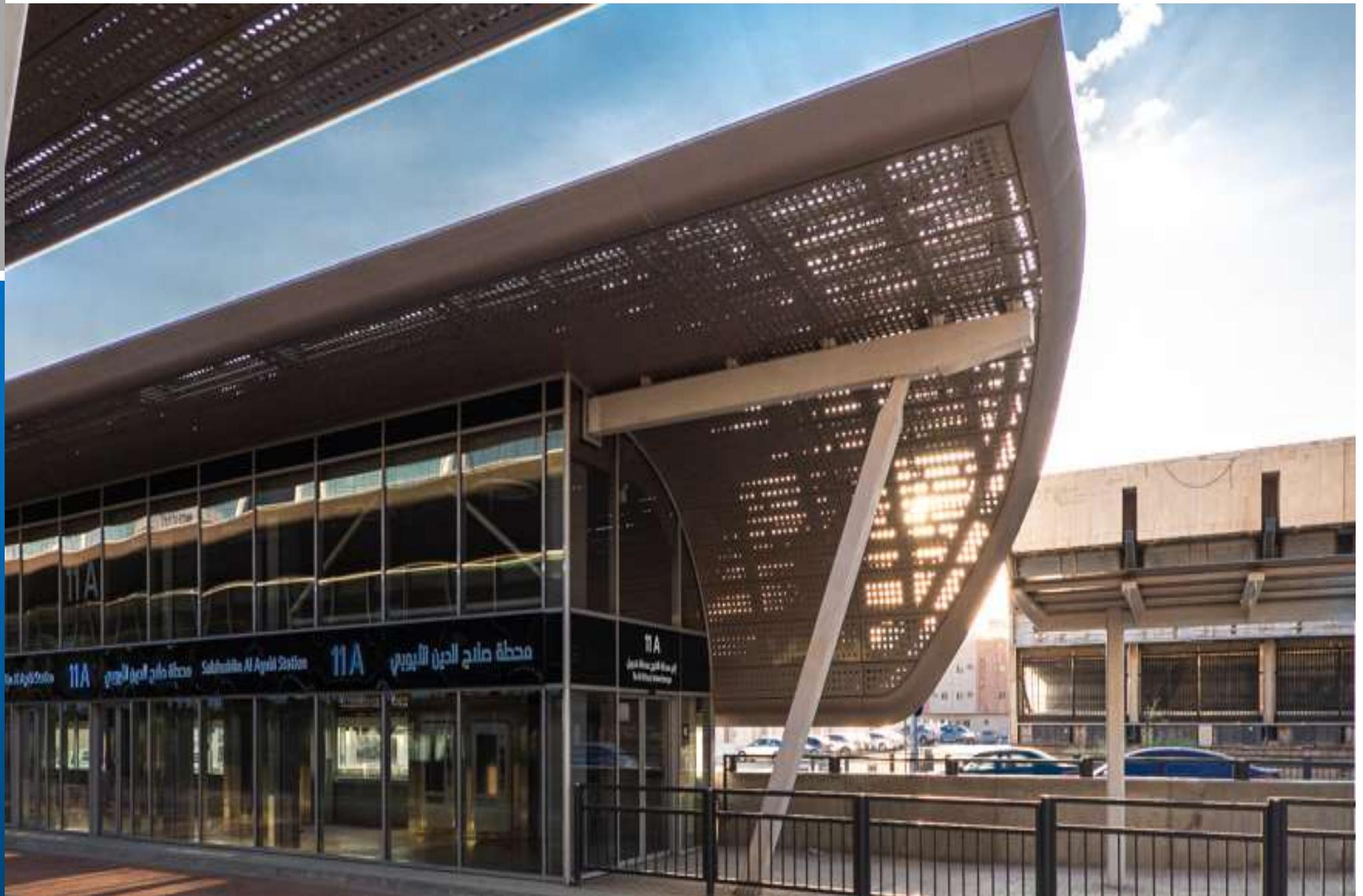
■ Riyadh Bus Rapid Transit Project, Saudi Arabia



■ Riyadh Bus Rapid Transit Project, Saudi Arabia



■ Riyadh Bus Rapid Transit Project, Saudi Arabia



■ Riyadh Bus Stops (CBS Project), Saudi Arabia



■ Riyadh Bus Stops (CBS Project), Saudi Arabia



■ Riyadh Metro Line 5, Saudi Arabia



■ Hail University, Saudi Arabia



■ Guangzhou Metro Line 5, China



■ Guangzhou Metro Line 3, China



■ Shanghai Metro Line 1, China



■ Chengdu Metro Line 2, China



■ Nanjing Subway Station, China



■ Guangzhou South Railway Station, China



■ Luoyang Longmen Railway Station, China



■ Dongguan Hou Street West Bus Station, China



■ Chengdu Second Ring Bus Station, China



■ Polise Company, Romania



■ Nanchang Citizen Center, China



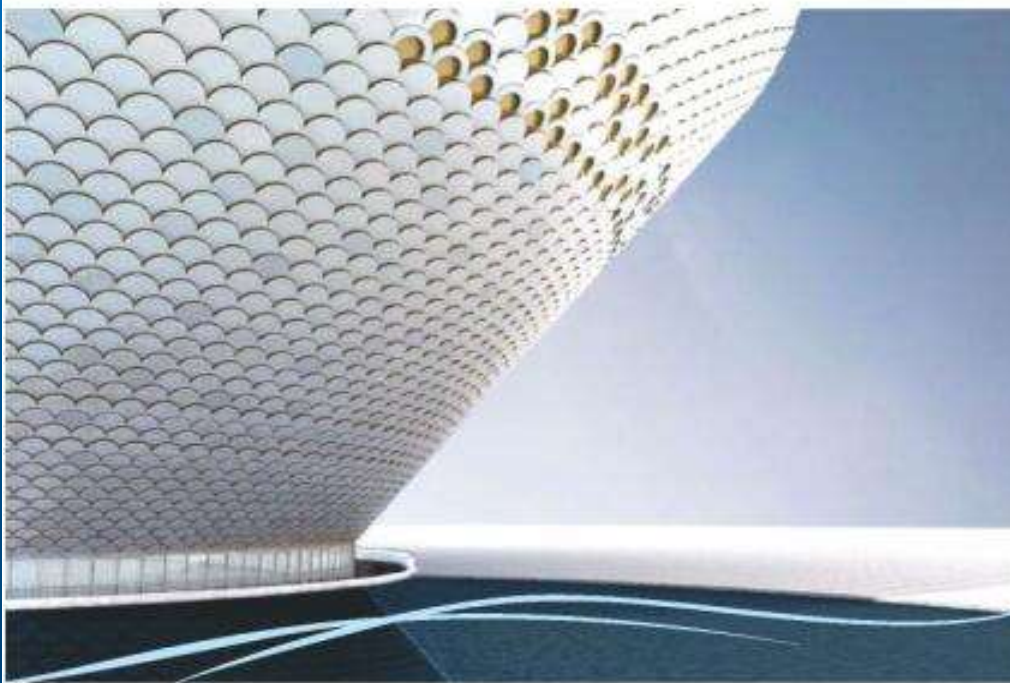
■ Wuhan Mental Hospital, China



■ Jinjing Hospital Building, China



■ Jingdezhen Cultural Center ■ Nanchang Children's Palace



■ Hanchuan Civil Service Centre Project, China



3. Tower & Hotel



www.alutile.com

■ Infinity Tower (Cayan Tower), Dubai, U.A.E



■ Dubai Princess Tower, U.A.E



■ Pheonicia Hotel, Saudi Arabia



■ Sea View Tower, Beirut-Lebanon



■ P.P.F tower & T.P.A Tower- Tanzania



■ Q Tower, Colombia



■ Rojan, Iran



■ Beirut Tower, Lebanon



■ Shatha Tower, U.A.E



■ Al-Nassar Tower, Kuwait



■ AL BAKER TOWER-QATAR

■ Qatar Project



■ Downtown Tower, Kuwait



■ Mezar Tower, U.A.E



■ Marriot Hotel, Australia



■ Catic Hotel, Beijing, China



■ Clarion Hotel the Edge, Norway



■ Marriot Hotel, Chongqing,China



■ Radisson hotel -Indonesia



4. Commercial & Residential Building



www.alutile.com

■ Red Sea Mall, Saudi Arabia



■ BG & P, Brazil



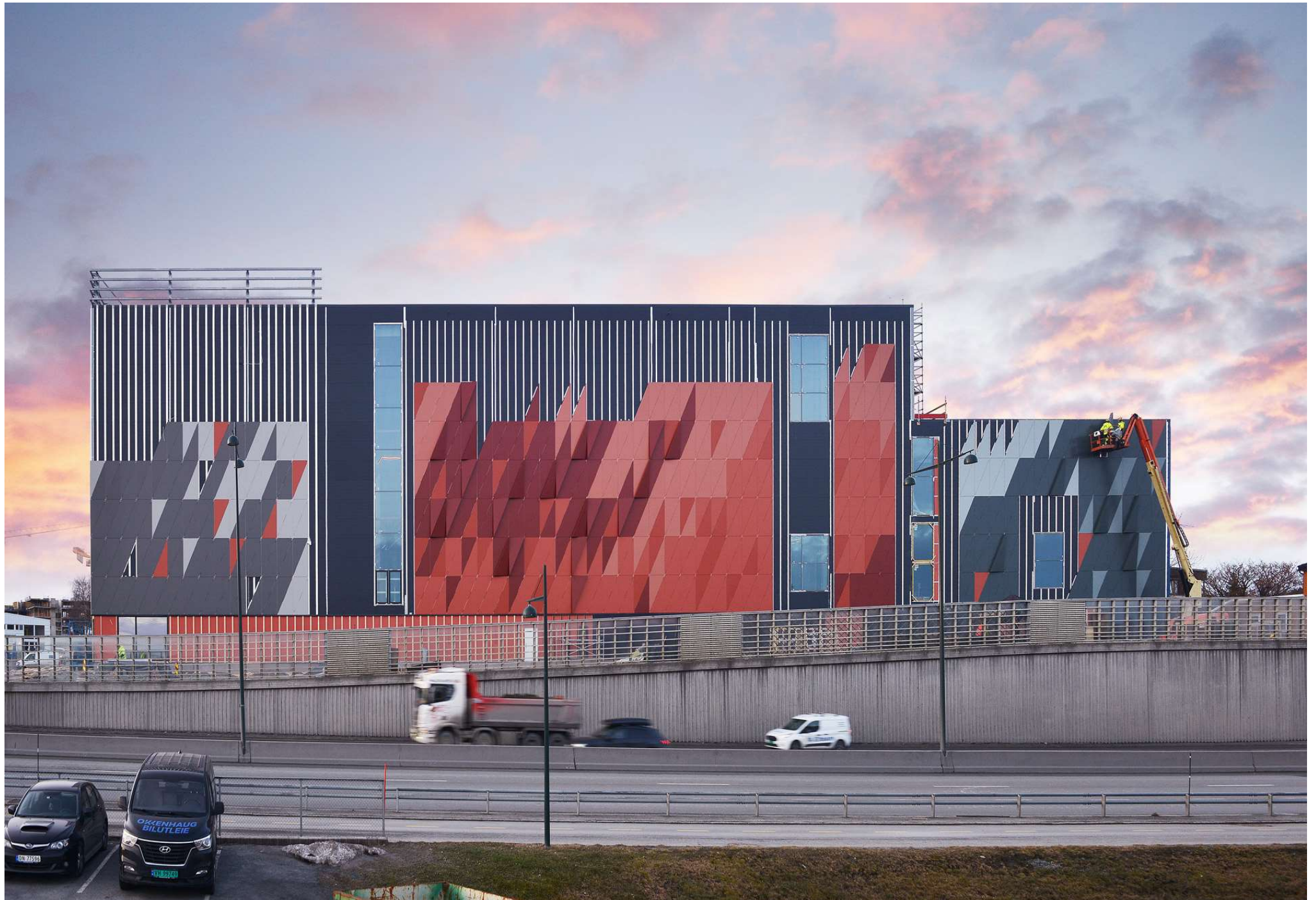
■ Shuka Shopping Mall, Moscow, Russia



■ Cuprum Shopping Mall, Poland



■ GHV 2 Project, Norway



■ Klatrehall i Trondheim, Norway



■ Klatrehall Trondheim Residential Building, Norway



■ Kompositt Hoy Glans Residential Building, Norway



■ HDI Menteng, Indonesia



■ Baltico, Portugal



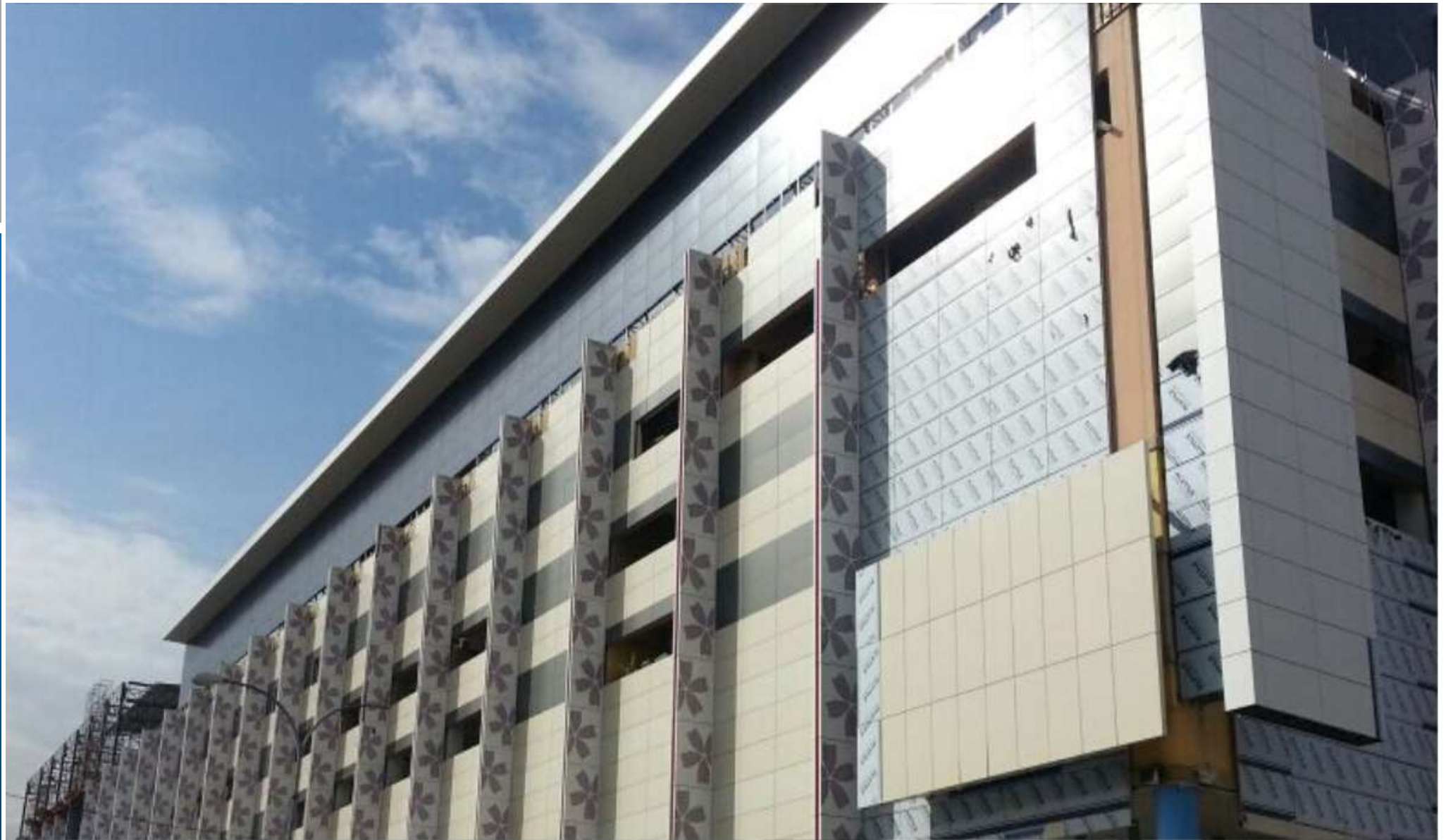
■ Corporate Green India



■ Citimed Building, Ecuador



■ Parkson Shopping Mall, Malaysia



■ Central Plaza, Thailand



■ Sinma Living Mall, Myanmar



■ Plasa Asia, Indonesia



■ Bicentenario, Venezuela



■ Sky Corporate, Brazil



■ Ghana Tower



■ Nipost, Nigeria



■ Atlantis Hotel, Australia



■ **Kross Border Building, Mauritius**



■ Impress Group Office Building, Bangladesh



■ Chongqing Tian Digital City Cyber, China



■ Chengdu Jinzheng Telecom Building, China



■ Shenzhen Yunshang Mansion, China



■ Wanda Plaza, China



■ Wuhan International Friendship, China



■ Changsha Tongcheng Business, China



■ Chongqing Yorkshire Building, China



■ Foshan Nanhai Tian An Center, China



■ Nanning Department Store, China



■ Hunan Chamber of Commerce Building, China



■ Chongqing Bonded Zone Office Building, China



■ Chongqing Century Emperor Building, China



■ Changchai Zhonglian Zhongke, China



■ Changsha Poly International Building

■ Changsha New Capital of Lotus



■ Chongqing Traffic Investment Building



■ Fuzhou Yuyang Central Building



■ Chongqing Yuefeng Business Plaza, China



■ Fuzhou Central World Plaza



■ Xiamen Wanda Plaza



■ Changsha Shuntian Financial Centre



■ Changsha No. 6 Building



■ Guangzhou Panyu Tian An Science, China



■ Chongqing CMCC Office Building, China



5. Showroom & Petrol Station



www.alutile.com

■ Rolls-Royce 4S, Australia



■ Bentley 4S, Australia



■ CCGT Showroom, Australia



■ BR Petrobras, Brazil



■ Shell, Brazil



THE END

THANK YOU



www.alutile.com